



# STANDARDS AND SPECIFICATIONS

FOR

PLANNING DATA SUBMISSION

(PLOT, ROADS & SERVICE CORRIDORS)

VERSION 1.18.2

## Town Planning Sector-Spatial Data Division

Standards & Specifications for Planning Data  
Submission (Plot, Roads & Service Corridors)  
Version 1.18.2

دائرة البلديات والنقل  
DEPARTMENT OF MUNICIPALITIES  
AND TRANSPORT

بلدية مدينة أبوظبي  
ABU DHABI CITY MUNICIPALITY



### Document control

Date	Version	Change Description	Changed By
14/07/2013	1.0	Initial Draft	Sunny Chandna
15/07/2013	1.1	Minor changes as after discussion with Mr. Abdelazim Elniweiri Hassan, Mr. Mohamed El Most Galgam & Eng. Ghada Mohammed ALHashmi	Sunny Chandna
17/07/2013	1.2	Changes in the drafting methodology after discussion with Mr. Mohamed El Most Galgam, Mohammed Khalid Hamoud, Sohaib J.A. Dababat	Sunny Chandna
18/07/2013	1.3	Final draft	Abdelazim Elniweiri
24/07/2013	1.4	Minor Changes	Sunny Chandna
05/08/2013	1.5	Added new features after discussion with UPD i.e. Pavement, parking Spaces and landscape areas	Sunny Chandna
29/08/2013	1.6	Added new features provided by DOT.	Sunny Chandna
10/11/2013	1.7	Modified File Naming structure Removed feature related to DOT	Sunny Chandna
20/11/2013	1.8	Some editing rephrasing and additions.	Abdelazim Elniweiri
21/11/2013	1.9	Minor editing	Sunny Chandna
04/12/2013	1.10	Added a new layer for service work areas	Sunny Chandna
05/12/2013	1.11	Modified Title Block and Service Work Area Attribute Block	Sunny Chandna
10/04/2014	1.12	Added new layer for project construction area	Sunny Chandna
03/08/2014	1.13	Added new layers for project activity area and bore hole	Sunny Chandna
18/09/2014	1.13.1	Minor changes related with code list values	Sunny Chandna
30/12/2014	1.14	Added basement layer	Sunny Chandna
21/10/2018	1.15	Added layer for Cycling and Jogging Track	Sunny Chandna
16/12/2018	1.16	Added layer for Road Barrier, Road Allay, Road Structure and cycle rack. Also some minor modifications in domain values	Sunny Chandna
28/04/2019	1.16.1	Included Reservation types in the specification document	Sunny Chandna
29/09/2019	17	Added layer for Rail Road features	Sunny Chandna
27/10/2019	17.1	Minor changes in service corridor and reservation strip	Sunny Chandna
10/11/2019	18	1. Added layer for Utility/infrastructure buffer Zone area 2. Added plot category and usage list in this document	Sunny Chandna
20/11/2019	18.1	Changed Municipality Logo	Sunny Chandna
02/08/2021	18.2	Changed name for new attributes (LayByOn), added default values for attributes and removed mandatory for attribute 'issheltered'	Vinay Kumar

# Town Planning Sector-Spatial Data Division

Standards & Specifications for Planning Data  
Submission (Plot, Roads & Service Corridors)  
Version 1.18.2

دائرة البلديات والنقل  
DEPARTMENT OF MUNICIPALITIES  
AND TRANSPORT  
بلدية مدينة أبوظبي  
ABU DHABI CITY MUNICIPALITY



---

Acronym & abbreviation .....	4
1. Introduction .....	5
2. Purpose .....	5
3. List of documents .....	6
4. CAD Specifications .....	7
4.1 Electronic File Format .....	7
4.2 File Naming .....	7
4.3 Scale and Units .....	8
4.4 Drawing Coordinates .....	9
4.5 AutoCAD Block Attributes .....	10
4.6 Title block .....	10
4.7 Drawings Layers .....	11
4.7.1. DWG File: Plot .....	12
4.7.2. DWG File: Roads .....	12
4.7.3. DWG File: ServiceCorridor .....	14
5. data capturing rule .....	15
6. Attribute BLOCKS .....	17
6.1 DWG File: Plot .....	17
6.2 DWG FILE: ROADS .....	18
6.3 DWG File: SERVICES .....	28
Appendix 1: SDD reference data collection process .....	34
Appendix 2: domain values for plot category and usage type .....	36

## Town Planning Sector-Spatial Data Division

Standards & Specifications for Planning Data  
Submission (Plot, Roads & Service Corridors)  
Version 1.18.2

دائرة البلديات والنقل  
DEPARTMENT OF MUNICIPALITIES  
AND TRANSPORT

بلدية مدينة أبوظبي  
ABU DHABI CITY MUNICIPALITY



### ACRONYM & ABBREVIATION

ACRONYM / ABBREVIATION	MEANING
ADM	Abu Dhabi Municipality
TPS	Town planning Sector
SDD	Spatial Data Division
DWG	AutoCAD native drawing file format
DOT	Department of Transport
UPD	Urban Planning Division
CDP	Community Development Portal
CPD	Construction Permits Division
GIS	Geographic Information System
CAD	Computer Aided Drafting
QC	Quality Control



## 1. INTRODUCTION

Planning data such as Master Plans, Roads, and Service Corridor are often prepared by consultants working for various government department and submitted to the Town Planning Sector (TPS) of Abu Dhabi City Municipality (ADM) for study and approval. This document give the standard and specifications set by the Spatial Data Division (SDD) of the Town Planning Sector to facilitate the CAD data capture of planning datasets Plot, Roads and Service Corridors, in such a way that the resulting data can be easily stored in the Spatial Data Division GIS database to serve ADM clients.

For Abu Dhabi City Municipality, the planning drawings must be submitted together with all necessary documents directly to the Urban Planning Division (UPD). The deliveries will be quality controlled by the either UPD or SDD staff who will then officially inform the concerned client whether their data submittal is accepted or not. The SDD expects data submissions to be in CAD format i.e. AutoCAD DWG format not later than 2012 release.

The specifications set the various parameters and guidelines to compile these features following a specific methodology in AutoCAD DWG format. Any planning data submitted and found not complying with the specifications given in this document will be rejected. The specifications are designed taking AutoCAD environment into consideration thus facilitating drafting and submitting drawings that fulfills SDD data submission requirements. In this regard tools for quality checking and uploading of planning data are developed based on these specifications and therefore all submission which do not pass the QC test will not be regarded as valid submittal.

Any queries regarding specification can be addressed via email to the Spatial Data Division of Abu Dhabi City Municipality at the GIS Service Desk [gis.support@adm.abudhabi.ae](mailto:gis.support@adm.abudhabi.ae).

## 2. PURPOSE

The purpose of this document is to furnish consultants and contractors working in Abu Dhabi by clear and concise specifications to be followed in preparation of planning data i.e. Plot, Roads & Service Corridors which aimed to be submitted to Abu Dhabi City Municipality-Town Planning Sector (TPS) represented by Urban Planning Division (UPD) or Spatial Data Division (SDD) for approval. Therefore, this document is designed to facilitate the CAD data capture of planning datasets (Plot, Roads and Service Corridors) in such a unified way that the resulting data can be easily stored in the Spatial Data Division GIS database to serve ADM clients.



### 3. LIST OF DOCUMENTS

To facilitate users with the compilation of the drawings the Spatial Data Division of Abu Dhabi City Municipality has prepared pre-defined drawing templates, Quality Control tool and other documents in full compliance with the specifications given in this document. The templates, QC tool, QC tool user manual and all other documents and files are provided by Abu Dhabi Municipality as external files attachments to this document to all clients. These clients therefore must obtain all the attachments listed in this document and the responsibility of acquiring this document and its attachments remains on them. These documents should be thoroughly reviewed and properly used to successfully compile and deliver the drawings according to specifications. The external attachment files of this document are listed and described in the Table 1. below

Table 1. List of external attachment files.

Document Name	Document Type	Description
<Drawing File Template>.dwg	DWG file	CAD drawing template in DWG format representing planning features developed according to specifications. The template contains pre-defined layers structures, drawing title block, pre-defined attributes blocks structures etc. The pre-defined attributes block structures must be used by the users as is. No changes shall be made to the structure of the block attributes. Each project should have 3 separate drawing files for following datasets <ul style="list-style-type: none"> <li>• Plot</li> <li>• Roads</li> <li>• Service Corridors</li> </ul>
<QC Tool>.fas	AutoCAD compiled LISP program	This is an AutoCAD macro based QC Tool developed to check the drawing in the AutoCAD environment. The users on completion of their drawings have the ability to directly QC their work prior delivery, ensuring that the drawings are free of errors. This is the initial check and the final check will be done at ADM. The tool might be subject to updates and improvements hence the letter "v" in the tool file name represents the "Version" of the release. Generally the version of the tool bear the same version as of the specification and template
<QC Tool User Manual>.pdf	Manual	The User Manual provides the necessary operational guidelines to use the QC Tool and guidelines to interpret the „error messages report“ which is generated to correct the drawing

Note: - Users can contact Abu Dhabi Municipality GIS Service Desk at [Gis.support@adm.abudhabi.ae](mailto:Gis.support@adm.abudhabi.ae) for any queries or updates



## 4. CAD SPECIFICATIONS

### 4.1 ELECTRONIC FILE FORMAT

The CAD drawing files must be submitted in full compliance with AutoCAD software which is not later than 2012 version. The drawings file format must be **.DWG format<sup>1</sup>**.

The specification uses basic AutoCAD objects which were available in much earlier releases of AutoCAD software facilitating users to quickly adapt themselves with these guidelines. The submission shall be comprised of two type of data such as:

1. Main Data which contain the planning data submitted for approval.
2. Additional Data containing additional layers and any other information necessary for the planners.

Depending of the project the submitted main data may represent maximum three themes, namely plot; roads; and service corridors. Consequently, the submission must contain maximum three (3) individual drawing files for these themes. Therefore, the submission shall be comprised of maximum three drawing files representing the main data themes and one additional drawing file for the additional data as shown in Table 2 below. The additional data file need not comply with this specification and it will be used only as a reference.

No.	Dataset	Drawing File?
1	PLOT	Yes
2	ROADS	Yes
3	SERVICES	Yes
4	Additional	Optional

Table 2. Matrix showing submission formats of the dataset

### 4.2 FILE NAMING

The DWG file name for the above main data sets must be composed by combining Project Code, Date, Drawing Type, Type of the dataset and the specification type as per the format given below:

<b>DWG File</b>	<ProjectID>_<YYYYMMDD>_<AP/MP>_<Plot/Roads/Services/additional>_<ADM/DOT>.dwg
-----------------	---

<sup>1</sup> For the sake of clarity, the name AutoCAD in these specifications always implies AutoCAD 2012 or earlier versions

## Town Planning Sector-Spatial Data Division

Standards & Specifications for Planning Data  
Submission (Plot, Roads & Service Corridors)  
Version 1.18.2



- <ProjectID>: - Unique Project code to which the drawing belongs generated from ADM CDP system
- <YYYYMMDD>: - Date in Year, Day and Month format
- <AP/MP>: - Type of the Drawing file i.e. As Planned (AP) or Master Plan (MP). AP refers to data related to projects for one or two related themes, such as plot only, roads only, service corridor only or roads and service corridors (i.e. 2 deliveries Roads and services) etc. MP refers to data related to Master Plan projects where all three themes must be delivered all together.
- <Plot/Roads/services>: - Type of the dataset i.e. Plot or Roads or service corridor
- <ADM/DOT>: - Specifies if the DWG file is as per DOT or ADM CAD specifications

Note: - The character "<>" is meant only for syntax and the file name must not have this special character

Example:

- P11\_20130707\_AP\_Plot\_ADM.dwg
- P21\_20131007\_AP\_Roads\_ADM.dwg
- P21\_20131007\_AP\_Services\_ADM.dwg
- P101\_20130707\_MP\_Plot\_ADM.dwg
- P101\_20130707\_MP\_Roads\_ADM.dwg
- P101\_20130707\_MP\_Services\_ADM.dwg
- P101\_20130707\_MP\_additional\_ADM.dwg

Any submitted drawing file not conforming to the naming structure shall be rejected. Any Master Plan Data submission which does not include all three themes will be rejected.

### 4.3 SCALE AND UNITS

All CAD drawing shall be drafted at full scale in architectural metric units where one drawing unit equals one meter as depicted in the below figure 1.

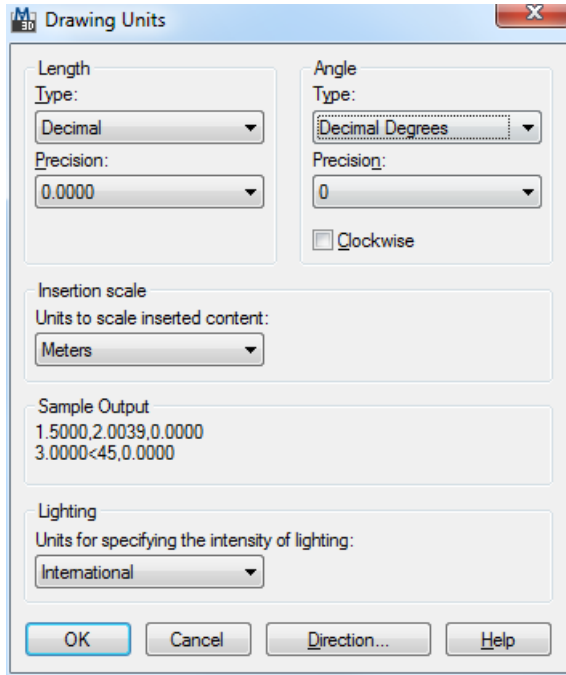


figure 1: Unit Settings in AutoCAD

#### 4.4 DRAWING COORDINATES

The drawing files must follow Abu Dhabi Municipality coordinate system which is described in Table 3 below which is given only for reference.

Note: - Features created in arbitrary coordinate system shall not be accepted.

However, in order to facilitate users, SDD has designed a data acceptance workflow by which the consultant and contractor may collect reference data directly from SDD prior to planning. Using this reference data, they will ensure that their plan is following the coordinate system and projection used by ADM.

Please refer to the "Appendix 1: SDD Reference Data Collection Process" for further details.

Table 3. Coordinate System Definition

<b>Horizontal Coordinate Reference System parameters</b>	
Projection:	Universal Transverse Mercator (UTM)
False_Easting:	500000.000000
False_Northing	0.000000

**Town Planning Sector-Spatial Data  
Division**

Standards & Specifications for Planning Data  
Submission (Plot, Roads & Service Corridors)  
Version 1.18.2



Central_Meridian For Zone 39:	51.000000
Central_Meridian For Zone 40:	57.000000
Scale_Factor:	0.999600
Latitude_Of_Origin:	0.000000
Linear Unit:	Meter (1.000000)
Zone :	40 North
<i>Underlying Geographic Coordinate System:</i>	GCS_WGS_1984
Angular Unit:	Degree (0.017453292519943299)
Prime Meridian:	Greenwich (0.000000000000000000)
Datum:	WGS_1984
Spheroid:	WGS_1984
Semimajor Axis:	6378137.000000000000000000
Semiminor Axis:	6356752.314245179300000000
Inverse Flattening:	298.257223563000030000

**4.5 AUTOCAD BLOCK ATTRIBUTES**

In AutoCAD an attribute block is a label that attaches data to a block. Each feature class has two associated layers, one for the geometry and the other for listing its details as an attribute block. Each feature table has its own distinct set of attributes grouped in an attribute block. Detailed list of layers and attribute block for each feature is listed in the subsequent section "Attribute Block"

**NOTE:**

- The user must insert an attribute block for each feature as specified in Section 5 below.
- The user shall use the template containing predefined layers and attribute block and shall NOT change or modify Any Parts of these predefined Attributes Blocks.

**4.6 TITLE BLOCK**

Apart from the feature attribute blocks, each CAD file submitted shall have one additional title Attribute Block. The drawing "Title" attributes block shall contain essential information to identify project and drawing details as specified in the Table 4. below.

In AutoCAD model space, the title attributes block shall be placed with its lower left hand corner point inserted at a coordinate location according to the drawing plot coordinates.

Information Field	Description	Mandatory Field
MainConsultantName	Name of the Main consultant. Provide if available in English	No

**Town Planning Sector-Spatial Data  
Division**

Standards & Specifications for Planning Data  
Submission (Plot, Roads & Service Corridors)  
Version 1.18.2



ConsultantAddress	Address of the consultant office.	No
ConsultantContactPerson	Name of person to be contacted	No
ConsultantPhone	Phone Number of the contact Person	No
Consultantemail	e-mail address of the contact person	No
MainContractorName	Name of the Main contractor. Provide if available in English	No
ContractorAddress	Address of the contractor Main office.	No
ContractorContactPerson	Name of person to be contacted	No
ContractorPhone	Phone Number of the contact Person	No
Contractoremail	e-mail address of the contact person	No

Table 4. Project Title Block Details

Note: - Submitted drawing must have at least consultant name, or a contractor name or both. Drawing submitted without any of the name shall be rejected. The above details must be entered using English Language.

#### 4.7 DRAWINGS LAYERS

To create the CAD drawings, the users must use the layers with the specified characteristics listed in Tables 5, 6 & 7 below. Layers and corresponding block attribute share the same name for example layer name "Plot" is combined with block attribute "PlotDetail".

As mentioned above in section 4.2 the (File Naming) there are 3 DWG files for 3 different datasets i.e. Plot, Roads and Services. Hence each DWG file has distinct set of layers which are listed in the Tables 5, 6 & 7 below.

Note: -

- Layer "DimensionLine" must contain AutoCAD dimensions as per the dimension style given in the template

## Town Planning Sector-Spatial Data Division

Standards & Specifications for Planning Data Submission (Plot, Roads & Service Corridors)  
Version 1.18.2

دائرة البلديات والنقل  
DEPARTMENT OF MUNICIPALITIES  
AND TRANSPORT

بلدية مدينة أبوظبي  
ABU DHABI CITY MUNICIPALITY



- Layer Title must contain drawing details such as title, border, other textual details and the attribute block as specified in "Title Block" Section

### 4.7.1. DWG FILE: PLOT

N	Layer Name	Topology	Constraint	Color	Line Type	Line Weight
1	Plot	Polyline	Closed	51	Continuous	Default (0.25)
2	PlotDetail	Point	Attribute Block	51	Continuous	Default (0.25)
3	Sector	Polyline	Closed	3	Continuous	0.30
4	SectorDetail	Point	Attribute Block	3	Continuous	Default (0.25)
5	Zone	Polyline	Closed	7	Continuous	0.40
6	ZoneDetail	Point	Attribute Block	7	Continuous	Default (0.25)
7	DimensionLine	NA	NA	7	Continuous	Default (0.25)
8	Title	Polyline	Closed	7	Continuous	Default (0.25)

Table 5 – PLOT Drawing Layers & corresponding Block Attribute

### 4.7.2. DWG FILE: ROADS

N	Layer Name	Topology	Constraint	Color	Line Type	Line Weight
1	RoadEdge	Polyline	NA	8	Continuous	Default (0.25)
2	RoadEdgeDetail	Point	Attribute Block	8	Continuous	Default (0.25)
3	RoadCenterLine	Polyline	NA	6	Dashed	Default (0.25)
4	RoadCenterLineDetail	Point	Attribute Block	6	Continuous	Default (0.25)
5	RoadEntrance	Polyline	Closed	30	Continuous	Default (0.25)
6	RoadEntranceDetail	Point	Attribute Block	30	Continuous	Default (0.25)
7	ParkingArea	Polyline	Closed	2	Continuous	Default

## Town Planning Sector-Spatial Data Division

Standards & Specifications for Planning Data Submission (Plot, Roads & Service Corridors)  
Version 1.18.2

دائرة البلديات والنقل  
DEPARTMENT OF MUNICIPALITIES  
AND TRANSPORT

بلدية مدينة أبوظبي  
ABU DHABI CITY MUNICIPALITY



						(0.25)
8	ParkingAreaDetail	Point	Attribute Block	2	Continuous	Default (0.25)
9	RoadLayBy	Polyline	Closed	43	Continuous	Default (0.25)
10	RoadlayByDetail	Point	Attribute Block	43	Continuous	Default (0.25)
11	RoadHump	Polyline	Closed	3	Continuous	Default (0.25)
12	RoadHumpDetail	Point	Attribute Block	3	Continuous	Default (0.25)
13	FootBridge	Polyline	Closed	140	Continuous	Default (0.25)
14	FootBridgeDetail	Point	Attribute Block	140	Continuous	Default (0.25)
15	RoadTunnel	Polyline	Closed	51	Continuous	Default (0.25)
16	RoadTunnelDetail	Point	Attribute Block	51	Continuous	Default (0.25)
17	Bridge	Polyline	Closed	5	Continuous	Default (0.25)
18	BridgeDetail	Point	Attribute Block	5	Continuous	Default (0.25)
19	UnderPass	Polyline	Closed	9	Continuous	Default (0.25)
20	UnderPassDetail	Point	Attribute Block	9	Continuous	Default (0.25)
21	Pavement	Polyline	Closed	42	Continuous	Default (0.25)
22	PavementDetail	Point	Attribute Block	42	Continuous	Default (0.25)
23	ParkingSpace	Polyline	Closed	7	Continuous	Default (0.25)
24	ParkingSpaceDetail	Point	Attribute Block	7	Continuous	Default (0.25)
25	LandscapeArea	Polyline	Closed	73	Continuous	Default (0.25)
26	LandscapeAreaDetail	Point	Attribute Block	73	Continuous	Default (0.25)
27	Basement	Polyline	Closed	200	Continuous	Default (0.25)
28	BasementDetail	Point	Attribute Block	200	Continuous	Default (0.25)
29	CyclingJoggingTrack	Polyline	Closed	234	Continuous	Default (0.25)
30	CyclingJoggingTrackDetail	Point	Attribute Block	234	Continuous	Default (0.25)

**Town Planning Sector-Spatial Data  
Division**

Standards & Specifications for Planning Data  
Submission (Plot, Roads & Service Corridors)  
Version 1.18.2

دائرة البلديات والنقل  
DEPARTMENT OF MUNICIPALITIES  
AND TRANSPORT

بلدية مدينة أبوظبي  
ABU DHABI CITY MUNICIPALITY



31	RoadBarrier	Polyline	Closed	1	Continuous	Default (0.25)
32	RoadBarrierDetail	Point	Attribute Block	1	Continuous	Default (0.25)
33	RoadAlley	Polyline	Closed	4	Continuous	Default (0.25)
34	RoadAlleyDetail	Point	Attribute Block	4	Continuous	Default (0.25)
35	RoadStructure	Polyline	Closed	51	Continuous	Default (0.25)
36	RoadStructureDetail	Point	Attribute Block	51	Continuous	Default (0.25)
37	CycleRack	Polyline	Closed	21	Continuous	Default (0.25)
38	CycleRackDetail	Point	Attribute Block	21	Continuous	Default (0.25)
39	RailRoadEdge	Polyline	NA	133	Continuous	Default (0.25)
40	RailRoadEdgeDetail	Point	Attribute Block	133	Continuous	Default (0.25)
41	RailRoadSurface	Polyline	Closed	153	Continuous	Default (0.25)
42	RailRoadSurfaceDetail	Point	Attribute Block	153	Continuous	Default (0.25)
43	RailRoadCenterline	Polyline	NA	161	Track	Default (0.25)
44	RailRoadCenterlineDetail	Point	Attribute Block	161	Continuous	Default (0.25)
45	Title	Polyline	Closed	7	Continuous	Default (0.25)
46	DimensionLine	NA	NA	7	Continuous	Default (0.25)

Table 6 – Road Drawing Layers & corresponding Block Attribute

4.7.3. DWG FILE: SERVICECORRIDOR

N	Layer Name	Topology	Constraint	Color	Line Type	Line Weight
1	ServiceCorridor	Polyline	Closed	2	Continuous	0.30
2	ServiceCorridorDetail	Point	Attribute Block	2	Continuous	Default (0.25)
3	ReservedStrip	Polyline	Closed	5	Continuous	Default (0.25)
4	ReservedStripDetail	Point	Attribute	5	Continuous	Default

## Town Planning Sector-Spatial Data Division

Standards & Specifications for Planning Data Submission (Plot, Roads & Service Corridors)  
Version 1.18.2

دائرة البلديات والنقل  
DEPARTMENT OF MUNICIPALITIES  
AND TRANSPORT

بلدية مدينة أبوظبي  
ABU DHABI CITY MUNICIPALITY



			Block			(0.25)
5	ServiceWorkArea	Polyline	Closed	3	Continuous	Default (0.25)
6	ServiceWorkAreaDetail	Point	Attribute Block	3	Continuous	Default (0.25)
7	ServiceConsArea	Polyline	Closed	1	Continuous	Default (0.25)
8	ServiceConsAreaDetail	Point	Attribute Block	1	Continuous	Default (0.25)
9	ServiceActivityArea	Polyline	Closed	6	Continuous	Default (0.25)
10	ServiceActivityAreaDetail	Point	Attribute Block	6	Continuous	Default (0.25)
11	BoreHole	Point	Attribute Block	30	Continuous	Default (0.25)
12	BufferZone	Polyline	Closed	4	Continuous	Default (0.25)
13	BufferZoneDetail	Point	Attribute Block	4	Continuous	Default (0.25)
14	DimensionLine	NA	NA	7	Continuous	Default (0.25)
15	Title	Polyline	Closed	7	Continuous	Default (0.25)

Table 7 – Service Corridor Drawing Layers & corresponding Block Attribute

### 5. DATA CAPTURING RULE

The layer's specifications listed in Tables 5, 6 & 7 above, must strictly follow the data capturing rules set below:

1. The geometries shall be topologically cleaned and shall not contain any undershoots, overshoots, zero length Polyline, overlapping objects, snapping errors, intersection errors, self intersection errors and duplicates
2. Snapping must be made only on vertices, snapping on edges must be avoided
3. The "Polyline" refers to AutoCAD LWPOLYLINE (light Weight Polyline)
4. Inner polygons or inner closed lines that constitute an island or a donut within the same polygon in the same layer shall not be created. Each closed Polyline object must be a single polygon
5. Ellipse, Splines and Arcs shall not be used at all. In case arcs or ellipses needs to be created to shape drawing objects, these shall be converted into Polyline and should be digitized in such a way that the space between the vertexes along the length of the chord shall be consistent with the drawing object shape and size, as shown in Figure 2 below.

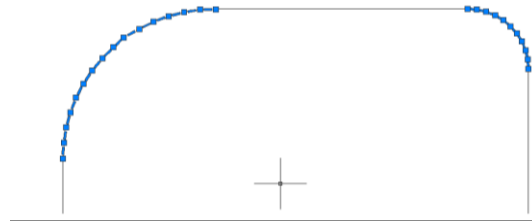


Figure 2: Transform Arc to Polyline

- Each block attribute (insertion) point must fall inside the area of the object polygon. The insertion point must spatially “reside” inside the corresponding polygon object, as shown below in Figure 3 below:

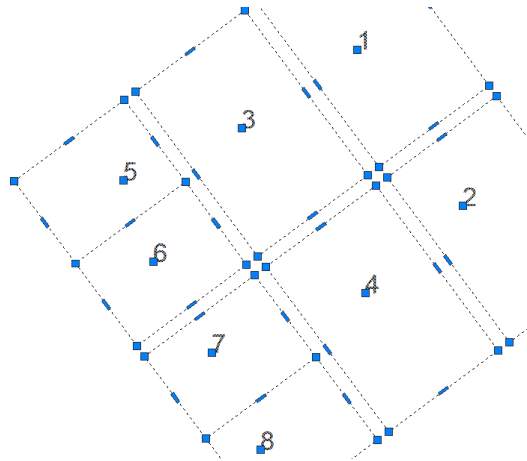


Figure 3: Block Attribute insertion points within polygon example

In case of linear objects that attribute block must be placed on the linear object snapped to one of its vertices, as shown below in Figure 4. Note: - Do not place the attribute block at intersection of the lines or at any point where two more lines are snapped

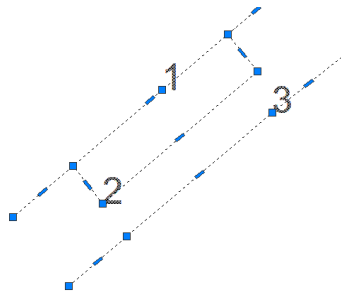


Figure 4: Block Attribute insertion points within polyLine example



7. The DWG file must not contain objects like hatch, solid, xref, xline, line, groups, unused blocks, unused line types, unused hatch styles etcetera
8. The drawing objects must not have elevation or width
9. The drawing file must not have any 3D objects such as 3D poly, heights, etc.
10. The drawing file must not have any proxy objects, such as unreferenced insertion points

## 6. ATTRIBUTE BLOCKS

The following section lists the structure of the predefined Attribute Blocks which shall be used in these specifications. Each of these Attribute Blocks is available in the attached sample drawing template. The predefined structure of the Attribute Block must not be changed and shall be used in conjunction with the appropriate layer in each drawing file.

### 6.1 DWG FILE: PLOT

#### 6.1.1. Plot

<b>Block Attribute Name</b>		PlotDetail	
<b>Description</b>		Attribute Block containing plot details	
<b>Layer</b>		PlotDetail	
<b>Attribute Details</b>			
Attribute	Data Type	Mandatory	Description
PlotNumber	Character	Yes	Number of a plot
SectorNumber	Character	Yes	Sector Number of a plot
UsageCategoryType	Character	Yes	Plot category Type
UsageType	Character	Yes	Plot Usage Type. This is dependent on the type of the usagecategorytype.  The detailed list of usagecategorytype and usagetype is provided in <b>Appendix 2: Domain values for Plot category and Usage</b> of this document.

#### 6.1.2. Sector

<b>Block Attribute Name</b>		SectorDetail	
<b>Description</b>		Attribute Block containing Sector details	
<b>Layer</b>		SectorDetail	
<b>Attribute Details</b>			
Attribute	Data Type	Mandatory	Description
SectorNumber	Character	Yes	Unique Number of the planned sector
SectorNameEnglish	Character	Yes	Sector Name in English
SectorNameArabic	Character	Yes	Sector Name in Arabic

#### 6.1.3. Zone

## Town Planning Sector-Spatial Data Division

Standards & Specifications for Planning Data  
Submission (Plot, Roads & Service Corridors)  
Version 1.18.2

دائرة البلديات والنقل  
DEPARTMENT OF MUNICIPALITIES  
AND TRANSPORT

بلدية مدينة أبوظبي  
ABU DHABI CITY MUNICIPALITY



<b>Block Attribute Name</b>		ZoneDetail	
<b>Description</b>		Attribute Block containing Zone details	
<b>Layer</b>		ZoneDetail	
Attribute Details			
Attribute	Data Type	Mandatory	Description
ZoneNameEnglish	Character	Yes	Unique name of the planned zone in English
ZoneNameArabic	Character	Yes	Unique name of the planned zone in Arabic

### 6.2 DWG FILE: ROADS

#### 6.2.1. RoadCentreLine

<b>Block Attribute Name</b>		RoadCentreLineDetail	
<b>Description</b>		Attribute Block containing RoadCentreLine details	
<b>Layer</b>		RoadCentreLineDetail	
Attribute Details			
Attribute	Data Type	Mandatory	Description
Medium	Character	Yes	Determines medium of the road. This attribute shall have following values: <i>surface, air, underground, semiBuried, undefined</i>
RoadSurfaceType	Character	Yes	Determines surface of the road. This attribute shall have following values: <i>tarmac, concrete, tiled, undefined</i>
RoadType	Character	Yes	Determines Type of the Road. This attribute shall have following values <i>highway, majorArterial, boulevard, avenue, interchange, street, trackRoute, accessLane, sikka, specialConditionStreet, mushtarak, undefined</i>
RoadNameEnglish	Character	No	Road Name in English
RoadNameArabic	Character	No	Road Name in Arabic. (This becomes mandatory if Road name in English is entered)
StreetID	Character	No	Street Number

#### 6.2.2. RoadEdge

<b>Block Attribute Name</b>		RoadEdgeDetail	
<b>Description</b>		Attribute Block containing RoadEdge details	
<b>Layer</b>		RoadEdgeDetail	

## Town Planning Sector-Spatial Data Division

Standards & Specifications for Planning Data  
Submission (Plot, Roads & Service Corridors)  
Version 1.18.2

دائرة البلديات والنقل  
DEPARTMENT OF MUNICIPALITIES  
AND TRANSPORT  
بلدية مدينة أبوظبي  
ABU DHABI CITY MUNICIPALITY



Attribute Details			
Attribute	Data Type	Mandatory	Description
Medium	Character	Yes	Determines medium of the road. This attribute shall have following values:  <i>surface, air, underground, semiBuried, undefined</i>
RoadSurfaceType	Character	Yes	Determines surface of the road. This attribute shall have following values:  <i>tarmac, concrete, tiled, undefined</i>

### 6.2.3. RoadEntrance

<b>Block Attribute Name</b>	RoadEntranceDetail		
<b>Description</b>	Attribute Block containing Road Entrance details		
<b>Layer</b>	RoadEntranceDetail		
Attribute Details			
Attribute	Data Type	Mandatory	Description
Medium	Character	Yes	Determines medium of the road. This attribute shall have following values:  <i>surface, air, underground, semiBuried, undefined</i>
RoadSurfaceType	Character	Yes	Determines surface of the road. This attribute shall have following values:  <i>tarmac, concrete, tiled, undefined</i>
RoadEntranceType	Character	Yes	Determines Type of the Road. This attribute shall have following values  <i>public, private</i>

### 6.2.4. ParkingArea

<b>Block Attribute Name</b>	ParkingAreaDetail		
<b>Description</b>	Attribute Block containing parking area details		
<b>Layer</b>	ParkingAreaDetail		
Attribute Details			
Attribute	Data Type	Mandatory	Description
Medium	Character	Yes	Determines medium of the road. This attribute shall have following values:  <i>surface, air, underground, semiBuried, undefined</i>
RoadSurfaceType	Character	Yes	Determines surface of the road. This

## Town Planning Sector-Spatial Data Division

Standards & Specifications for Planning Data Submission (Plot, Roads & Service Corridors)  
Version 1.18.2

			attribute shall have following values:  <i>tarmac, concrete, tiled, undefined</i>
NumOfParkings	integer	Yes	Number of parking's in the parking bay
ParkingFor	Character	Yes	Determines the parking area is designated for vehicle type. This attribute shall have following values:  <i>Car, bus, truck, bike, undefined</i>
ParkingBayType	Character	Yes	Determines the type of parking bay's available in the parking area. This attribute shall have following values  <i>perpendicular, parallel, angular</i>  <b>NOTE:- Incase if parking area have different parking bay types, then create multiple parking areas corresponding to the particular bay type.</b>

### 6.2.5. RoadLayby

<b>Block Attribute Name</b>	RoadlaybyDetail		
<b>Description</b>	Attribute Block containing Road Lay by details		
<b>Layer</b>	RoadLaybyDetail		
Attribute Details			
Attribute	Data Type	Mandatory	Description
Medium	Character	Yes	Determines medium of the road. This attribute shall have following values:  <i>surface, air, underground, semiBuried, undefined</i>
RoadSurfaceType	Character	Yes	Determines surface of the road. This attribute shall have following values:  <i>tarmac, concrete, tiled, undefined</i>
RoadLaybyOn	Character	Yes	Determines type of the road lay by. This attribute shall have following values:  <i>kerbSide, layby, undefined</i>
RoadLaybyType	Character	Yes	Determines physical location of the road lay by. This attribute shall have following values:  <i>bus, taxi, busAndTaxi, undefined</i>

### 6.2.6. RoadHump

## Town Planning Sector-Spatial Data Division

Standards & Specifications for Planning Data  
Submission (Plot, Roads & Service Corridors)  
Version 1.18.2

دائرة البلديات والنقل  
DEPARTMENT OF MUNICIPALITIES  
AND TRANSPORT

بلدية مدينة أبوظبي  
ABU DHABI CITY MUNICIPALITY



<b>Block Attribute Name</b>		RoadHumpDetail	
<b>Description</b>		Attribute Block containing Road Hump details	
<b>Layer</b>		RoadHumpDetail	
Attribute Details			
Attribute	Data Type	Mandatory	Description
GroundLevelHeight	Float	Yes	Ground level height of the hump
RoadHumpType	Character	Yes	Determines type of the road hump. This attribute shall have following values:  <i>pelican, speedTable, hump, undefined</i>

### 6.2.7. FootBridge

<b>Block Attribute Name</b>		FootBridgeDetail	
<b>Description</b>		Attribute Block containing Foot Bridge details	
<b>Layer</b>		FootBridgeDetail	
Attribute Details			
Attribute	Data Type	Mandatory	Description
FootBridgeType	Character	Yes	Determines type of the footbridge. This attribute shall have following values:  <i>concrete, metal, wood, undefined</i>
FootBridgeClassification	Character	Yes	Determines classification of the footbridge. This attribute shall have following values:  <i>general, metro, tram, undefined</i>

### 6.2.8. RoadTunnel

<b>Block Attribute Name</b>		RoadTunnelDetail	
<b>Description</b>		Attribute Block containing Road Tunnel details	
<b>Layer</b>		RoadTunnelDetail	
Attribute Details			
Attribute	Data Type	Mandatory	Description
Medium	Character	Yes	Determines medium of the road. This attribute shall have following values:  <i>surface, air, underground, semiBuried, undefined</i>
RoadSurfaceType	Character	Yes	Determines surface of the road. This attribute shall have following values:  <i>tarmac, concrete, tiled, undefined</i>
RoadTunnelType	Character	Yes	Determines type of the road tunnel. This attribute shall have following values:  <i>roadTunnel, railwayTunnel, undefined</i>

## Town Planning Sector-Spatial Data Division

Standards & Specifications for Planning Data  
Submission (Plot, Roads & Service Corridors)  
Version 1.18.2

دائرة البلديات والنقل  
DEPARTMENT OF MUNICIPALITIES  
AND TRANSPORT

بلدية مدينة أبوظبي  
ABU DHABI CITY MUNICIPALITY



### 6.2.9. Bridge

<b>Block Attribute Name</b>		BridgeDetail	
<b>Description</b>		Attribute Block containing Bridge details	
<b>Layer</b>		BridgeDetail	
<b>Attribute Details</b>			
Attribute	Data Type	Mandatory	Description
NameEnglish	Character	Yes	Name of the Bridge in English
NameArabic	Character	Yes	Name of the Bridge in Arabic
BridgeType	Character	Yes	Determines type of the bridge. This attribute shall have following values:  <i>cantileverBridge, griderBridge, undefined</i>
GroundLevelHeight	Float	Yes	Ground Level Height of the Bridge

### 6.2.10. Underpass

<b>Block Attribute Name</b>		UnderpassDetail	
<b>Description</b>		Attribute Block containing Underpass details	
<b>Layer</b>		UnderpassDetail	
<b>Attribute Details</b>			
Attribute	Data Type	Mandatory	Description
UnderPassType	Character	Yes	Determines type of the underpass. This attribute shall have following values:  <i>pedestrian, cars, pedestrianAndCars, undefined</i>

### 6.2.11. ParkingSpace

<b>Block Attribute Name</b>		ParkingSpaceDetail	
<b>Description</b>		Attribute Block containing individual parking spaces details	
<b>Layer</b>		ParkingSpaceDetail	
<b>Attribute Details</b>			
Attribute	Data Type	Mandatory	Description
IsSheltered	Boolean	No	Specify is parking in the bay is sheltered or not. This attribute shall have value Y or N
ParkingType	Character	Yes	Determines parking type. This attribute shall have following values:  <i>public, handicapped, imam, reserved, emergency, police, hotelApartment,</i>

## Town Planning Sector-Spatial Data Division

Standards & Specifications for Planning Data  
Submission (Plot, Roads & Service Corridors)  
Version 1.18.2

دائرة البلديات والنقل  
DEPARTMENT OF MUNICIPALITIES  
AND TRANSPORT

بلدية مدينة أبوظبي  
ABU DHABI CITY MUNICIPALITY



			<i>bank, private, valet, undefined</i>
--	--	--	--

### 6.2.12. Pavement

<b>Block Attribute Name</b>		PavementDetail	
<b>Description</b>		Attribute Block containing pavement details	
<b>Layer</b>		PavementDetail	
Attribute Details			
Attribute	Data Type	Mandatory	Description
Medium	Character	Yes	Determines medium of the road. This attribute shall have following values:  <i>surface, air, underground, semiBuried, undefined</i>
PavementType	Character	Yes	Determines pavement type. This attribute shall have following values:  <i>tiled, concreted, asphalt, unpaved, undefined</i>
AccessType	Character	Yes	Determines pavement access type. This attribute shall have following values:  <i>public, private, undefined</i>
ToBeClipped	Character	Yes	Determines if this is an inner pavement which should be clipped or deducted as a donut/island in the main pavement. This attribute shall have following values:  <i>Yes, No</i>

### 6.2.13. LandscapeArea

<b>Block Attribute Name</b>		LandscapeAreaDetail	
<b>Description</b>		Attribute Block containing Landscape Area details	
<b>Layer</b>		LandscapeAreaDetail	
Attribute Details			
Attribute	Data Type	Mandatory	Description
AreaType	Character	Yes	Determines landscape area type. This attribute shall have following values:  <i>sand, treePlantation, grass, tile, gravel, other</i>
ToBeClipped	Character	Yes	Determines if this is an inner landscape which should be clipped or deducted as a donut/island in the main landscape.

## Town Planning Sector-Spatial Data Division

Standards & Specifications for Planning Data Submission (Plot, Roads & Service Corridors)  
Version 1.18.2

دائرة البلديات والنقل  
DEPARTMENT OF MUNICIPALITIES  
AND TRANSPORT

بلدية مدينة أبوظبي  
ABU DHABI CITY MUNICIPALITY



			This attribute shall have following values:  Yes, No
--	--	--	--

### 6.2.14. Basement

<b>Block Attribute Name</b>		BasementDetail	
<b>Description</b>		Attribute Block containing Basement details	
<b>Layer</b>		BasementDetail	
Attribute Details			
Attribute	Data Type	Mandatory	Description
PlotNumber	Character	Yes	Number of a plot
SectorNumber	Character	Yes	Sector Number of a plot
BasementType	Character	Yes	Determines Basement type. This attribute shall have following values:  <i>ramp, carLift, undefined</i>
NumOfLevels	Integer	Yes	Number Of Basement Levels
NumOfVentilationShafts	Integer	Yes	Number Of Ventilation Shafts
ProposedPublicCarParkings	Integer	Yes	The Proposed Number Of Public Car parking's
ProposedPrivateCarParkings	Integer	Yes	The Proposed Number Of Private Car parking's
RequiredCarParkings	Integer	Yes	Actual Number of Car parking's required (Demand)
ParkingType	Character	Yes	Determines Parking type in the Basement. This attribute shall have following values:  <i>public, private, publicAndPrivate, undefined</i>

### 6.2.15. CyclingJoggingTrack

<b>Block Attribute Name</b>		CyclingJoggingTrackDetail	
<b>Description</b>		Attribute Block containing Cycling & Jogging Track details	
<b>Layer</b>		CyclingJoggingTrackDetail	
Attribute Details			
Attribute	Data Type	Mandatory	Description
Medium	Character	Yes	Determines medium of the road. This attribute shall have following values:  <i>surface, air, underground, semiBuried, undefined</i>
CycleJogTrackType	Character	Yes	Determines Cycle and Jogging track type. This attribute shall have following values:

## Town Planning Sector-Spatial Data Division

Standards & Specifications for Planning Data  
Submission (Plot, Roads & Service Corridors)  
Version 1.18.2

دائرة البلديات والنقل  
DEPARTMENT OF MUNICIPALITIES  
AND TRANSPORT

بلدية مدينة أبوظبي  
ABU DHABI CITY MUNICIPALITY



			<i>cycle, jogging, cycleAndJogging</i>
SurfaceType	Character	Yes	Determines cycle and jogging track surface type. This attribute shall have following values:  <i>concrete, tarmac, tiled, undefined, rubber, asphalt</i>

### 6.2.16. RoadBarrier

<b>Block Attribute Name</b>		RoadBarrierDetail	
<b>Description</b>		Attribute Block containing RoadBarrier details	
<b>Layer</b>		RoadBarrierDetail	
Attribute Details			
Attribute	Data Type	Mandatory	Description
BarrierStatus	Character	Yes	Determines status of the barrier. This attribute shall have following values:  <i>temporary, permanent</i>
BarrierType	Character	Yes	Determines type of the Road Barrier. This attribute shall have following values:  <i>barrier, bollard</i>
Controlled	Character	Yes	This is a Boolean value indicating if the barrier is controlled or not. This attribute shall have following values:  <i>Yes, No</i>
Material	Character	No	Determines material of the Road Barrier. This attribute shall have following values:  <i>concrete, metal, plastic, undefined</i>

### 6.2.17. RoadAlley

<b>Block Attribute Name</b>		RoadAlleyDetail	
<b>Description</b>		Attribute Block containing RoadAlley details	
<b>Layer</b>		RoadAlleyDetail	
Attribute Details			
Attribute	Data Type	Mandatory	Description
AlleyType	Character	Yes	Determines type of the Road Alley. This attribute shall have following values:  <i>roadAlley, Musharaka</i>
Medium	Character	Yes	Determines medium of the road. This

## Town Planning Sector-Spatial Data Division

Standards & Specifications for Planning Data Submission (Plot, Roads & Service Corridors)  
Version 1.18.2

دائرة البلديات والنقل  
DEPARTMENT OF MUNICIPALITIES  
AND TRANSPORT

بلدية مدينة أبوظبي  
ABU DHABI CITY MUNICIPALITY



			attribute shall have following values:  <i>surface, air, underground, semiBuried, undefined</i>
RoadSurfaceType	Character	Yes	Determines surface of the road. This attribute shall have following values:  <i>tarmac, concrete, tiled, undefined</i>

### 6.2.18. CycleRack

<b>Block Attribute Name</b>		CycleRackDetail	
<b>Description</b>		Attribute Block containing Cycle rack details	
<b>Layer</b>		CycleRackDetail	
Attribute Details			
Attribute	Data Type	Mandatory	Description
Medium	Character	Yes	Determines medium of the road. This attribute shall have following values:  <i>surface, air, underground, semiBuried, undefined</i>
RoadSurfaceType	Character	Yes	Determines surface of the road. This attribute shall have following values:  <i>tarmac, concrete, tiled, undefined</i>
numofparkings	Number	Yes	Determines number of parking's for the cycle

### 6.2.19. RoadStructure

<b>Block Attribute Name</b>		RoadStructureDetail	
<b>Description</b>		Attribute Block containing Structures related to road and transport infrastructure details	
<b>Layer</b>		RoadStructureDetail	
Attribute Details			
Attribute	Data Type	Mandatory	Description
StructureType	Character	Yes	Determines type of the structure. This attribute shall have following values:  <i>ventilationShaft, undefined</i>

### 6.2.20. RailRoadEdge

<b>Block Attribute Name</b>		RailRoadEdgeDetail	
<b>Description</b>		Attribute Block containing RailRoadEdge details	
<b>Layer</b>		RailRoadEdgeDetail	
Attribute Details			
Attribute	Data Type	Mandatory	Description

**Town Planning Sector-Spatial Data  
Division**

Standards & Specifications for Planning Data  
Submission (Plot, Roads & Service Corridors)  
Version 1.18.2



Type	Character	Yes	Determines type of the Rail Road. This attribute shall have following values:  <i>metro, tram, undefined, train</i>
Medium	Character	Yes	Determines medium of the rail road. This attribute shall have following values:  <i>surface, air, underground, semiBuried, undefined</i>

6.2.21. RailRoadSurface

<b>Block Attribute Name</b>		RailRoadSurfaceDetail	
<b>Description</b>		Attribute Block containing RailRoadSurface details	
<b>Layer</b>		RailRoadSurfaceDetail	
Attribute Details			
Attribute	Data Type	Mandatory	Description
Type	Character	Yes	Determines type of the Rail Road. This attribute shall have following values:  <i>metro, tram, undefined, train</i>
Medium	Character	Yes	Determines medium of the rail road. This attribute shall have following values:  <i>surface, air, underground, semiBuried, undefined</i>

6.2.22. RailRoadCenterline

<b>Block Attribute Name</b>		RailRoadCenterlineDetail	
<b>Description</b>		Attribute Block containing RailRoadCenterline details	
<b>Layer</b>		RailRoadCenterlineDetail	
Attribute Details			
Attribute	Data Type	Mandatory	Description
Type	Character	Yes	Determines type of the Rail Road. This attribute shall have following values:  <i>metro, tram, undefined, train</i>
NameEnglish	Character	No	Name of the Track in English
NameArabic	Character	No	Name of the Track in Arabic
TrackNumber	Character	No	Assigned number or code for the track. The number should not exceed more than 10 characters
Medium	Character	Yes	Determines medium of the rail road. This attribute shall have following values:

## Town Planning Sector-Spatial Data Division

Standards & Specifications for Planning Data Submission (Plot, Roads & Service Corridors)  
Version 1.18.2

دائرة البلديات والنقل  
DEPARTMENT OF MUNICIPALITIES  
AND TRANSPORT

بلدية مدينة أبوظبي  
ABU DHABI CITY MUNICIPALITY



			<i>surface, air, underground, semiBuried, undefined</i>
--	--	--	---

### 6.3 DWG FILE: SERVICES

#### 6.3.1. ServiceCorridor

<b>Block Attribute Name</b>		ServiceCorridorDetail	
<b>Description</b>		Attribute Block containing Service corridor details	
<b>Layer</b>		ServiceCorridorDetail	
Attribute Details			
Attribute	Data Type	Mandatory	Description
CorridorType	Character	Yes	Determines type of the service corridor. This attribute shall have following values:  <i>roadServiceReservation, buildingServiceReservation, specialServiceReservation, undefined</i>
CorridorWidth	Float	Yes	Total Width of the corridor

#### 6.3.2. ReservedStrip

<b>Block Attribute Name</b>		ReservedStripDetail	
<b>Description</b>		Attribute Block containing utility reserved strip details	
<b>Layer</b>		ReservedStripDetail	
Attribute Details			
Attribute	Data Type	Mandatory	Description
ReservedStripType	Character	Yes	Determines type of the reserved strip. This attribute shall have following values:  <i>WD, WT, ET, ED, ETISALAT, DU, MCC, CCTV, GHQ, ITS, SL, S, SW, SWM, I, TR, DC, G, SPARE, SHARE, HC, MISC</i>
ReservedStripWidth	Float	Yes	Width of the reserved strip

Note: - Service Corridor is a polygon feature which will contain utility Reserved Strips as individual polygons as depicted in figure 5 below. Both the polygon features will have their own IDs following the block insertion rule as mentioned in data capturing rule section

## Town Planning Sector-Spatial Data Division

Standards & Specifications for Planning Data Submission (Plot, Roads & Service Corridors)  
Version 1.18.2

دائرة البلديات والنقل  
DEPARTMENT OF MUNICIPALITIES  
AND TRANSPORT

بلدية مدينة أبوظبي  
ABU DHABI CITY MUNICIPALITY

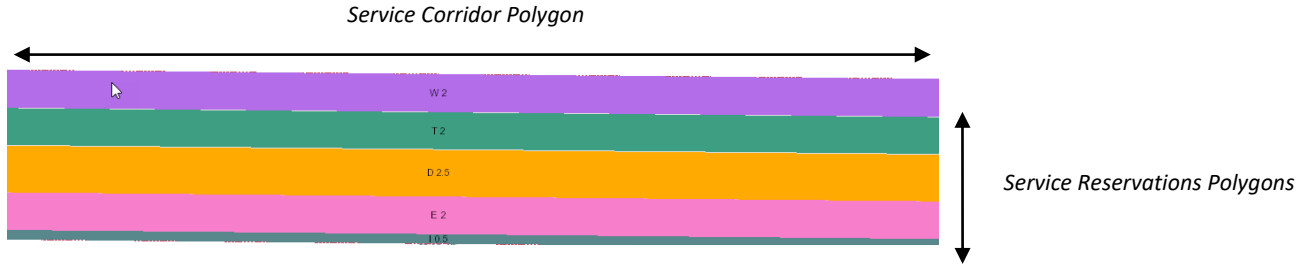


Figure 5: Capturing Service Corridor and Reserved Strip

### Note: -

- Below is the description of the service types for reference

Reservation Type Code	Description
WD	Water Distribution
WT	Water Transmission
ET	Electric Transmission
ED	Electric Distribution
ETISALAT	Telecom Distribution
DU	Telecom Distribution
MCC	Telecom Distribution
CCTV	Telecom Distribution
GHQ	Telecom Distribution
ITS	Telecom Distribution
MISC	Miscellaneous Distribution
SL	Street Lightening
S	Sewerage Distribution
SW	Storm Water Distribution
SWM	Storm Water Main Distribution
I	Irrigation Distribution
TR	Trees Distribution
DC	District Cooling Distribution
G	Gas Distribution
SPARE	This is a spare for future distribution
SHARE	This distribution is sharing between multiple distributions
HC	House Connection Distribution

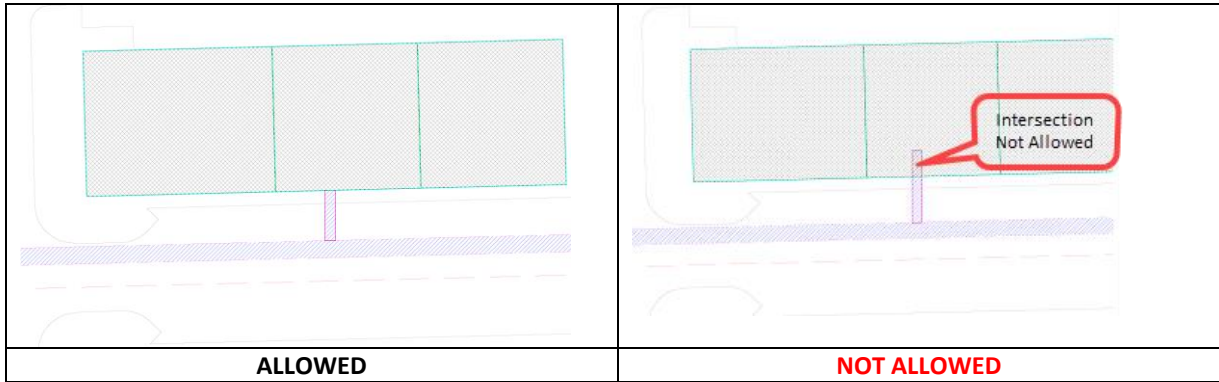
- The consultant/contractor should provide plot geometry along with the proposed service corridor and reservation strips
- The service corridors except house connections must not intersect or overlap with plot boundary. The boundaries can however snap at external boundaries as shown below

## Town Planning Sector-Spatial Data Division

Standards & Specifications for Planning Data Submission (Plot, Roads & Service Corridors)  
Version 1.18.2

دائرة البلديات والنقل  
DEPARTMENT OF MUNICIPALITIES  
AND TRANSPORT

بلدية مدينة أبوظبي  
ABU DHABI CITY MUNICIPALITY



### 6.3.3. ServiceWorkArea

<b>Block Attribute Name</b>	ServiceWorkAreaDetail		
<b>Description</b>	Service Work Area is the work area for laying utility services and/or road works. This attribute block contain details of the service work area		
<b>Layer</b>	ServiceWorkAreaDetail		
<b>Attribute Details</b>			
<b>Attribute</b>	<b>Data Type</b>	<b>Mandatory</b>	<b>Description</b>
Remarks	Character	No	Description of the service work area
ExpectedStartDate	Character	Yes	Expected Start Date of the work. The date shall be provided in the format DD-MON-YYYY e.g. 05-DEC-2013, were - two digits will be used for the day, - three letters for the month and - four digits for the year
ExpectedEndDate	Character	Yes	Expected End Date of the work. The date shall be provided in the format DD-MON-YYYY e.g. 05-DEC-2013, were - two digits will be used for the day, - three letters for the month and - four digits for the year
WorkAreaFor	Character	Yes	Determines for the expected type of work, planned in the work area. This attribute shall have following values:  <i>Temporary, Permanent, Water Distribution, Water Transmission, Irrigation, Treated Water, Chilled Water, Storm Water, Sewerage, Electric Distribution, Electric Transmission, Telecom, Road Infrastructure, Etihad Rail, Metro, Miscellaneous, DOLPHIN, LRT, STEP, Tram, Gas</i>

## Town Planning Sector-Spatial Data Division

Standards & Specifications for Planning Data Submission (Plot, Roads & Service Corridors)  
Version 1.18.2

### 6.3.4. BufferZone

<b>Block Attribute Name</b>		BufferZoneDetail	
<b>Description</b>		Buffer Zone is a defined buffer area around an infrastructure (utility/Transport). This attribute block contain details of the Buffer Zone area	
<b>Layer</b>		BufferZoneDetail	
Attribute Details			
Attribute	Data Type	Mandatory	Description
Remarks	Character	No	Description of the Buffer area
BufferZoneFor	Character	Yes	Determines the buffer zone created for type of utility or infrastructure. This attribute shall have following values:  <i>Permanent, Water Distribution, Water Transmission, Irrigation, Treated Water, Chilled Water, Storm Water, Sewerage, Electric Distribution, Electric Transmission Cable, Electric Transmission OHL, Telecom, Road Infrastructure, Etihad Rail, Metro, Miscellaneous, DOLPHIN, LRT, STEP, Tram, Gas</i>
BufferZoneWidth	Float	Yes	Total width of the buffer zone in meters.

### 6.3.5. ServiceConsArea

<b>Block Attribute Name</b>		ServiceConsAreaDetail	
<b>Description</b>		Service Construction Area is the project area as submitted in the shop drawings This attribute block contain details of the service work area	
<b>Layer</b>		ServiceConsAreaDetail	
Attribute Details			
Attribute	Data Type	Mandatory	Description
Remarks	Character	No	Description of the service work area
PhaseStartDate	Character	No	Phase Start Date of the work. The date shall be provided in the format DD-MON-YYYY e.g. 05-DEC-2013, were - two digits will be used for the day, - three letters for the month and - four digits for the year
PhaseEndDate	Character	No	Phase End Date of the work. The date shall be provided in the format DD-MON-YYYY e.g. 05-DEC-2013, were - two digits will be used for the day, - three letters for the month and - four digits for the year
ConsStartDate	Character	No	Construction Start Date of the work.

## Town Planning Sector-Spatial Data Division

Standards & Specifications for Planning Data Submission (Plot, Roads & Service Corridors)  
Version 1.18.2

			The date shall be provided in the format DD-MON-YYYY e.g. 05-DEC-2013, were - two digits will be used for the day, - three letters for the month and - four digits for the year
ConsEndDate	Character	No	Construction End Date of the work. The date shall be provided in the format DD-MON-YYYY e.g. 05-DEC-2013, were - two digits will be used for the day, - three letters for the month and - four digits for the year
ContractorName	Character	Yes	The contractor who is contracted to perform this activity under the submitted shop drawing
ContPrjMgrName	Character	Yes	Contractor Project Manager Name in English
ContPrjMgrMobileNum	Character	Yes	Contractor Project Manager mobile number
ContSiteSupervisorName	Character	Yes	Contractor Site Supervisor Name in English
ContSiteSupervisorMobNum	Character	Yes	Contractor Site Supervisor Mobile Number
InfrastructureType	Character	Yes	Determines type of the infrastructure service in the construction work area. This attribute shall have following values:  <i>Temporary, Permanent, Water Distribution, Water Transmission, Irrigation, Treated Water, Chilled Water, Storm Water, Subsurface Drain Sewerage, Electric Distribution, electric Transmission, Oil, Gas, Solid Waste refined Petroleum, CO2 Pipeline, Telecom/Fiber Optic, Roads, Service Corridor, Etihad Rail, Metro, Public Realm, undefined</i>

### 6.3.6. ServiceActivityArea

<b>Block Attribute Name</b>	ServiceActivityAreaDetail
<b>Description</b>	Service Activity Areas are the sub activities as individual projects within a project construction area. They are also submitted separately in a shop drawing. This attribute block

**Town Planning Sector-Spatial Data  
Division**

Standards & Specifications for Planning Data  
Submission (Plot, Roads & Service Corridors)  
Version 1.18.2



contain details of the service Activity area			
<b>Layer</b>		ServiceActivityAreaDetail	
<b>Attribute Details</b>			
Attribute	Data Type	Mandatory	Description
UtilityDuctSize	Double	Yes	Utility Sleeve/Duct Size
UtilityDuctDepth	Double	Yes	Utility Duct Line Depth
ExcavationWidth	Double	Yes	Excavation Width
ExcavationLength	Double	Yes	Excavation Length
DrillingMethod	String	No	Proposed method of drilling e.g. HDD, Micro Tunneling, Auger Thrust etc.
ActivityAreaType	String	Yes	Determines type of the Activity area in the construction work area. This attribute shall have following values  <i>NDRC, asphalt, tiled, green, concrete, undefined</i>
SoilRockType	String	Yes	Soil Rock type at drilling depth. Specify it as <i>undefined</i> if not applicable
NOIProjectID	String	Yes	This is the CDP ProjectID for the corresponding approved <i>Service Construction Area</i> . This can be referred in the NOI document

6.3.7. Borehole

<b>Block Attribute Name</b>		Borehole	
<b>Description</b>		This is the location of the Boreholes available in a Service Activity Area. The feature class is dependent on the above <i>ServiceActivityArea</i> and must be submitted along with the above <i>ServiceActivityArea</i> .  <b>Note:</b> - <i>The insertion point of the Borehole attribute block must be placed inside the corresponding Service Activity Area</i>	
<b>Layer</b>		Borehole	
<b>Attribute Details</b>			
Attribute	Data Type	Mandatory	Description
WaterTableDepth	Double	Yes	Water table depth
WaterTableLevel	Double	Yes	Water Table Level
GroundLevel	Double	Yes	Ground Level
AsphaltLevel	Double	Yes	Asphalt Level
Interface	String	No	Applicable interface

The Attribute Block shall strictly observe the following rules:

1. Attributes blocks shall be inserted as per the drafting rules defined in "Data Capturing Rules" section



2. The block attribute predefined template must be used.
3. Text entities shall not be used
4. Attributes with predefined list of values (or domain values) shall contain only those values. These values are listed in the "Description" column and they are case sensitive (i.e. they must be used as it is)
5. In each block attribute special characters, repeated characters, letters instead of numbers and vice versa shall be flagged as data entry errors. Care shall be taken in entering the block attributes values to avoid any data entry errors.

#### APPENDIX 1: SDD REFERENCE DATA COLLECTION PROCESS

Consultants assigned by government departments to prepare plans and design for any master plan, road and/or utility services are entitled to receive digital spatial reference data from Abu Dhabi City Municipality. Digital reference data may include: 1. Base Map data that give constructed man-made features and natural features in the project area; Planning data which gives planned plots, roads and service corridor reservation. To receive such planning data, the Consultant has to apply to the Spatial Data Division providing copy of the following attached to his application:

1. Letter of assignment.
2. Site map of the project.
3. Copy of Commercial License.

The cycle of data submission therefore may start with receiving the reference data for the project area from ADM and data submission is seen to be as shown the figure below.

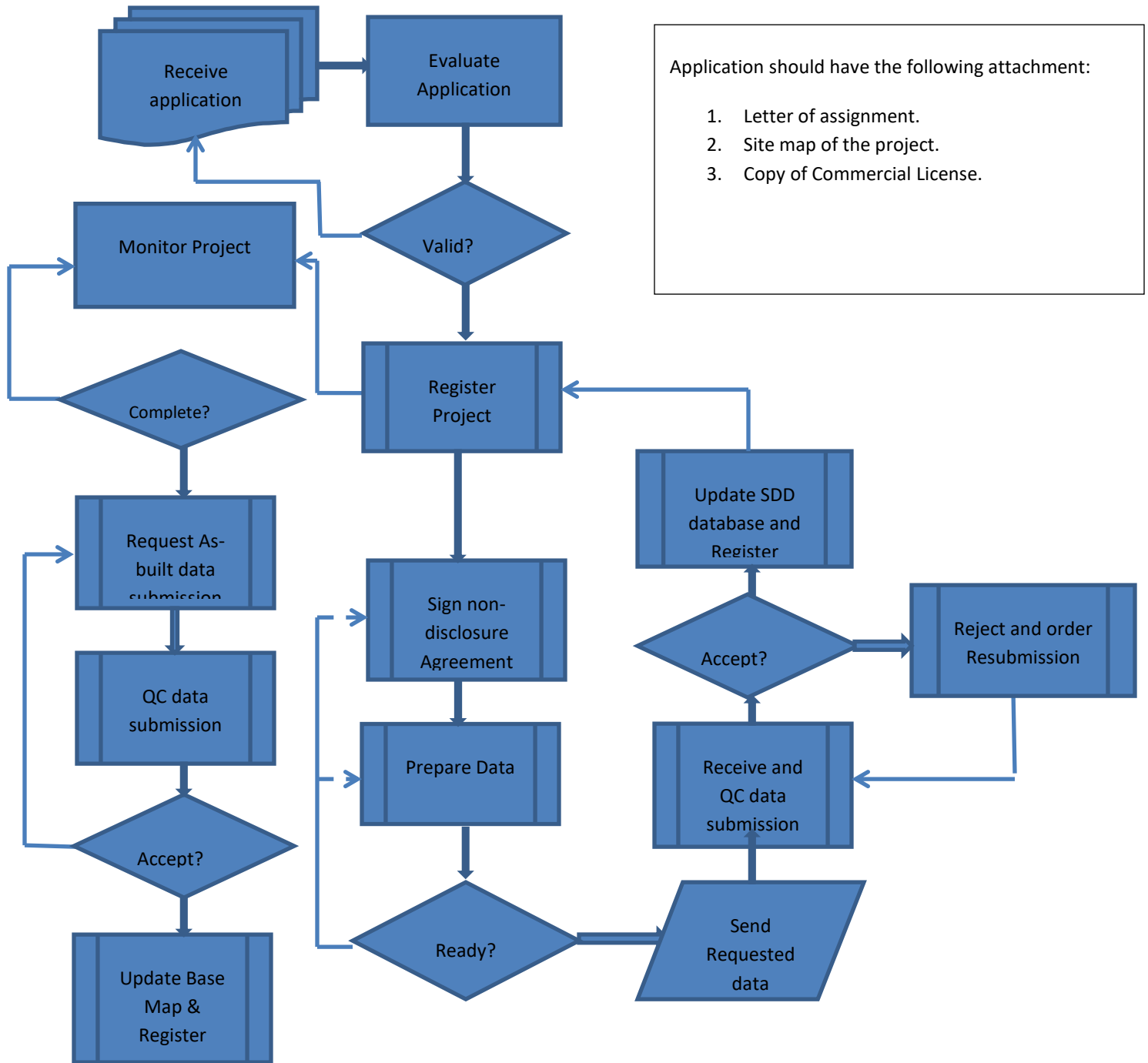
A consultant/contractor registry database will be created and maintained and all consultants/contractors are entitled to receive data, submit plans and designs for approval, get survey services necessary for checking their demarcation, getting NOC and approvals, submit as-built data and get Completion Certificate during the life cycle of their projects. The registry database will be used to track projects and notify consultants/contractors whenever a data submission is due.

# Town Planning Sector-Spatial Data Division

Standards & Specifications for Planning Data Submission (Plot, Roads & Service Corridors)  
Version 1.18.2

دائرة البلديات والنقل  
DEPARTMENT OF MUNICIPALITIES  
AND TRANSPORT

بلدية مدينة أبوظبي  
ABU DHABI CITY MUNICIPALITY



Application should have the following attachment:

1. Letter of assignment.
2. Site map of the project.
3. Copy of Commercial License.

## Town Planning Sector-Spatial Data Division

Standards & Specifications for Planning Data  
Submission (Plot, Roads & Service Corridors)  
Version 1.18.2

دائرة البلديات والنقل  
DEPARTMENT OF MUNICIPALITIES  
AND TRANSPORT

بلدية مدينة أبوظبي  
ABU DHABI CITY MUNICIPALITY



### APPENDIX 2: DOMAIN VALUES FOR PLOT CATEGORY AND USAGE TYPE

Below is a list of plot category and usage type generated as on 10/Nov/2019. The domain values mentioned here must be used in UsageCategory and UsageType attributes of the PlotDetail of the attribute block.

Note: - There could be cases when proposed category type or usage type might not be available in this list. For such cases please coordinate with ADM SDD for their directions

Plot Category Type and Usage Type (Updated On 10/Nov/2019)	
USAGECATEGORYTYPE	USAGETYPE
agricultural	Agricultural and animal production
agricultural	HagganaPatrols
agricultural	Research Center and Poultry production
agricultural	agriculturalLand
agricultural	agriculturalResearchCenter
agricultural	agricultureAndCattle
agricultural	animalHusbandry
agricultural	camelRacing
agricultural	dairyLivestockFacility
agricultural	farm
agricultural	fishFarms
agricultural	forest
agricultural	grass
agricultural	grazing
agricultural	handicappedAgriculturalCenter
agricultural	horseStables
agricultural	landscape
agricultural	nationalPark
agricultural	nurseryFarm
agricultural	organicFarms
agricultural	other
agricultural	palmGarden
agricultural	poultryOperation
agricultural	ranch
agricultural	seasonal
agricultural	tmpHorsesRanch
agricultural	tmpRanch
agricultural	undefined

## Town Planning Sector-Spatial Data Division

Standards & Specifications for Planning Data  
Submission (Plot, Roads & Service Corridors)  
Version 1.18.2

دائرة البلديات والنقل  
DEPARTMENT OF MUNICIPALITIES  
AND TRANSPORT

بلدية مدينة أبوظبي  
ABU DHABI CITY MUNICIPALITY



archaeological	castle
archaeological	fort
archaeological	other
archaeological	tombSite
archaeological	undefined
commercial	GroceryAndCafetrea
commercial	Hospital&residence
commercial	Markets
commercial	NeighborhoodServiceCenter
commercial	Offices&shops
commercial	Super Market
commercial	Zoo
commercial	apartmentHotel
commercial	apartmentHotel&retailshops
commercial	apartmentHotel/retail
commercial	apartmentHotelAndResidentialAndRetail
commercial	arena/HotelAndRetail
commercial	bakery
commercial	bank
commercial	bankingServices
commercial	boatDock
commercial	cafeteria
commercial	carParkingBuilding
commercial	carShowrooms
commercial	carWashing
commercial	club
commercial	commercial
commercial	commercial shops
commercial	commercial/commercialAccomodation
commercial	commercial/offices
commercial	commercial/retialTrade
commercial	commercialBuilding
commercial	commercialCenter
commercial	commercialCenterAndHotel
commercial	commercialLand
commercial	commercialMarkets
commercial	commercialProperty
commercial	commercialRecreation

## Town Planning Sector-Spatial Data Division

Standards & Specifications for Planning Data  
Submission (Plot, Roads & Service Corridors)  
Version 1.18.2

دائرة البلديات والنقل  
DEPARTMENT OF MUNICIPALITIES  
AND TRANSPORT

بلدية مدينة أبوظبي  
ABU DHABI CITY MUNICIPALITY



commercial	commercialVilla
commercial	communityCenter
commercial	communityCenterAndRetailShops
commercial	communityHallsAndMeetingRooms
commercial	communityMarket
commercial	cooperative
commercial	exhibitionCenter
commercial	farmersMarket
commercial	flowersShowroom
commercial	generalMarket
commercial	generalServiceOffices
commercial	hospital
commercial	hotel
commercial	hotel&hotelApartments
commercial	hotel/residential
commercial	hotel/resort
commercial	hotelAndHospitalAndComplexCancerTreatmentCenters
commercial	hotelAndRetail
commercial	hotelAndRetailShops
commercial	hotelVillasApartments
commercial	investmentLand
commercial	investmentResidential
commercial	laundry
commercial	lifestyleResot
commercial	mall
commercial	market
commercial	marketAndRetailShops
commercial	mixUse
commercial	mixedUseResidential
commercial	multiunits
commercial	multiusage
commercial	officeBuilding
commercial	offices
commercial	officesAndGeneralBusinessServices
commercial	other
commercial	partSaleShops
commercial	peopleMarket
commercial	postOffice

## Town Planning Sector-Spatial Data Division

Standards & Specifications for Planning Data  
Submission (Plot, Roads & Service Corridors)  
Version 1.18.2

دائرة البلديات والنقل  
DEPARTMENT OF MUNICIPALITIES  
AND TRANSPORT

بلدية مدينة أبوظبي  
ABU DHABI CITY MUNICIPALITY



commercial	privateHospital
commercial	recreation
commercial	recreationalAreaTemporary
commercial	regionalRetail
commercial	residential
commercial	residential building
commercial	residential/Retail/Civic
commercial	residential/residentialApartments
commercial	residentialAndRetail
commercial	residentialApartments
commercial	residentialBuildingMultiUnit
commercial	residentialCommercial
commercial	residentialRetail
commercial	residentialRetailCommercial
commercial	residentialVilla
commercial	resort
commercial	restaurant
commercial	retail
commercial	retail&Restaurants
commercial	retailMarketCompound
commercial	retailShops
commercial	retailTrade
commercial	retailTrade/FishMeatAndVegetablesMarket
commercial	retailTrade/TransportAndAccessories
commercial	salesCentre
commercial	shopResturantAndPuncher
commercial	shoppingCenter
commercial	shopsAndCoop
commercial	showroom
commercial	storageFacility
commercial	tempPunture
commercial	tempResturant
commercial	touristResortAndChalet
commercial	undefined
commercial	vegetableMarket
commercial	villas
commercial	weddingHall
communication	Pop server

## Town Planning Sector-Spatial Data Division

Standards & Specifications for Planning Data  
Submission (Plot, Roads & Service Corridors)  
Version 1.18.2

دائرة البلديات والنقل  
DEPARTMENT OF MUNICIPALITIES  
AND TRANSPORT

بلدية مدينة أبوظبي  
ABU DHABI CITY MUNICIPALITY



communication	Telecommunication
communication	center
communication	centralObservationStation
communication	communicationControlRoom
communication	etisalatBuilding
communication	etisalatRoom
communication	etisalatTower
communication	exchangeServices
communication	fiberOpticRoom
communication	gsmTower
communication	meetMeRoom
communication	microwaveStation
communication	monoTransmissionPole
communication	other
communication	postBox
communication	postOffice
communication	postOfficeBoxCompound
communication	radioStation
communication	server
communication	telecommunicationServices
communication	telephoneBooth
communication	telephoneExchange
communication	tetraTower
communication	transmissionBoostingStation
communication	tvStation
communication	undefined
cultural	MartyrMonumentField
cultural	almaqtaFort
cultural	association
cultural	cinema
cultural	civic/cultural
cultural	communityCenter
cultural	conferenceCenter
cultural	culturalCenter
cultural	culturalFoundation
cultural	jordanianSociety
cultural	library
cultural	magazine

## Town Planning Sector-Spatial Data Division

Standards & Specifications for Planning Data  
Submission (Plot, Roads & Service Corridors)  
Version 1.18.2

دائرة البلديات والنقل  
DEPARTMENT OF MUNICIPALITIES  
AND TRANSPORT

بلدية مدينة أبوظبي  
ABU DHABI CITY MUNICIPALITY



cultural	militaryMuseum
cultural	museum
cultural	other
cultural	theatre
cultural	touristInformationCenter
cultural	undefined
diplomatic	consulate
diplomatic	embassy
diplomatic	mission
diplomatic	other
diplomatic	undefined
educational	Schoolfacility
educational	StudentResidence
educational	academy
educational	boardingSchool
educational	childCenter
educational	college
educational	educationCenter
educational	emiratesCollegeForAdvancedEducation
educational	equestrianSchool
educational	institute
educational	kindergarten
educational	middleSchool
educational	nursery
educational	offices
educational	other
educational	privateSchool
educational	publicSchool
educational	quranEducationalSchool
educational	researchCenter
educational	school
educational	schoolAndKindergarten
educational	schoolFacility
educational	specialNeedsSchool
educational	undefined
educational	university
educational	vehicleDrivingTraining
educational	vocationalTrainingCenter

## Town Planning Sector-Spatial Data Division

Standards & Specifications for Planning Data  
Submission (Plot, Roads & Service Corridors)  
Version 1.18.2

دائرة البلديات والنقل  
DEPARTMENT OF MUNICIPALITIES  
AND TRANSPORT

بلدية مدينة أبوظبي  
ABU DHABI CITY MUNICIPALITY



governmental	AbuDhabiFundForDevelopment
governmental	AbuDhabiRetirementPensions&BenefitsFund
governmental	MilitaryFacilities
governmental	PoliceEmergencyAndSafetyPoint
governmental	PoliceStationAndCivilDefense
governmental	PoultryMarket
governmental	PrivateLaboratory
governmental	abattoir
governmental	abattoirAndCattleMarket
governmental	agriResearchStation
governmental	agriculturalGuidanceCenter
governmental	agriculturalMarketingCenter
governmental	authority
governmental	carDetentionYard
governmental	carpetsAndFurnitureExhibition
governmental	centralLabrotary
governmental	centralMarket
governmental	checkPoint
governmental	civilDefence
governmental	coastalGuard
governmental	communityService/policeBuildingAndCivilDefence
governmental	cooperativeAssociation
governmental	court
governmental	crownPrinceDewan
governmental	culturalEstablishment
governmental	department
governmental	documentCenter
governmental	educationalEstablishments
governmental	employeesAccommodationSecurityGate
governmental	encryptedWirelessnetworkTower
governmental	facilityCenter
governmental	garbishCollectionCenter
governmental	governmentBuildings
governmental	governmentQuarter
governmental	governmentReserve
governmental	governmentalEstablishment
governmental	governmentalFacility
governmental	healthCare

## Town Planning Sector-Spatial Data Division

Standards & Specifications for Planning Data  
Submission (Plot, Roads & Service Corridors)  
Version 1.18.2

دائرة البلديات والنقل  
DEPARTMENT OF MUNICIPALITIES  
AND TRANSPORT

بلدية مدينة أبوظبي  
ABU DHABI CITY MUNICIPALITY



governmental	infrastructure/surfaceParking
governmental	kiosk
governmental	managementBuilding
governmental	marineCenter
governmental	marineLicenseCenter
governmental	materialQuality
governmental	medicalWarehouse
governmental	militaryFacility
governmental	miniMunicipality
governmental	ministry
governmental	mosque
governmental	municipalFacility
governmental	municipalityCenter
governmental	nationalDefenseColledge
governmental	offices
governmental	other
governmental	policeFacility
governmental	policeStation
governmental	policeStationAndEmergencyPoint
governmental	presidentialDewan
governmental	prison
governmental	publicBuildings
governmental	publicFacilities
governmental	publicLand
governmental	rehabilitaionSite
governmental	researchFacility
governmental	researchInovationCenter
governmental	securityAndSafetyFacility
governmental	services
governmental	slaughterHouse
governmental	temporarySite
governmental	tent
governmental	theResearchCenter
governmental	trafficControlCenter
governmental	undefined
governmental	wildlifeEnvironmentalProtectionCenter
health	Altmedcenter
health	bloodBank

## Town Planning Sector-Spatial Data Division

Standards & Specifications for Planning Data  
Submission (Plot, Roads & Service Corridors)  
Version 1.18.2

دائرة البلديات والنقل  
DEPARTMENT OF MUNICIPALITIES  
AND TRANSPORT

بلدية مدينة أبوظبي  
ABU DHABI CITY MUNICIPALITY



health	clinic
health	elderlyNursing
health	falconHospital
health	hospital
health	medicalCenter
health	medicalStore
health	other
health	privateHospital
health	publicHospital
health	specialNeedsCenter
health	undefined
health	vetLaboratory
health	veterinaryClinic
health	veterinaryHospital
industrial	CarToursClub
industrial	CraftActivities
industrial	Harbour-Port Facilities
industrial	Industrial - Uncategorized elsewhere
industrial	Khalifa Industrial City B
industrial	ResearchAndDevelopment
industrial	Showroom, workshop and warehouse
industrial	abattoir
industrial	asphaltMixer
industrial	bakery
industrial	buildingMaterialFactory
industrial	canteen
industrial	carAgent
industrial	carAuction
industrial	carsWarehouse
industrial	commercialMarket
industrial	companyCamp
industrial	dataCenter
industrial	drillingEquipmentDepot
industrial	factory
industrial	fineArtWork&Display
industrial	garage
industrial	generalIndustry
industrial	generalIndustry/Chemicals&PetroleumMaterials

## Town Planning Sector-Spatial Data Division

Standards & Specifications for Planning Data  
Submission (Plot, Roads & Service Corridors)  
Version 1.18.2

دائرة البلديات والنقل  
DEPARTMENT OF MUNICIPALITIES  
AND TRANSPORT

بلدية مدينة أبوظبي  
ABU DHABI CITY MUNICIPALITY



industrial	generalIndustry/drugFactory&Storage
industrial	generalIndustry/foodFactories
industrial	generalIndustry/warehouse
industrial	heavyIndustry
industrial	heavyIndustry/Chemicals
industrial	industrialAndResidential
industrial	industrialLand
industrial	industrialServices
industrial	laborCamp
industrial	labs
industrial	leasedIndustrialLand
industrial	logistic
industrial	manufactureOfConstructionMaterials
industrial	materialStorage
industrial	medicalWasteTreatment
industrial	meterWorkshopBuilding
industrial	multiusage
industrial	officeAndMaterialStorage
industrial	offices
industrial	oilDrillingCompaniesArea
industrial	other
industrial	petroleumInstitute
industrial	port/docsAndIndustrialZone
industrial	printingPress
industrial	refrigeratedStore
industrial	servicesArea
industrial	showroom
industrial	solarFields
industrial	store
industrial	sustainableVilla/masdarCity
industrial	tempTransportation
industrial	temporaryCarParking
industrial	temporaryIndustrial
industrial	temporarySite
industrial	temporaryStorageSite
industrial	temporayIndustrialLand
industrial	trading
industrial	transportation

## Town Planning Sector-Spatial Data Division

Standards & Specifications for Planning Data  
Submission (Plot, Roads & Service Corridors)  
Version 1.18.2

دائرة البلديات والنقل  
DEPARTMENT OF MUNICIPALITIES  
AND TRANSPORT

بلدية مدينة أبوظبي  
ABU DHABI CITY MUNICIPALITY



industrial	treatmentPlant
industrial	undefined
industrial	warehouse
industrial	waterTankerFillingStation
industrial	woodProductManufacturing
industrial	workshop
private	ResidentialComplex
private	conservationArea
private	developmentProjectLand
private	harbor
private	island
private	offices
private	palace
private	private
private	privateLand
private	privatePort
private	privateSchool
private	restHouse
private	singleUnits/retailTrade
private	undefined
recreational	AbuDhabiFalconClub
recreational	AbuDhabiGolfClub
recreational	FoodTrucks
recreational	GamesArea
recreational	Marina - Recreational Boat Storage
recreational	Marina/ Recreational Boat Storage
recreational	ObservationTower
recreational	Open Area
recreational	Park&ParkingStructure
recreational	Playground
recreational	PublicGardenAndPlaygrounds
recreational	WalkingTrack
recreational	abu Dhabi Cornish
recreational	activities
recreational	anchorage
recreational	beach
recreational	boatFloat
recreational	boatFloatPort

## Town Planning Sector-Spatial Data Division

Standards & Specifications for Planning Data  
Submission (Plot, Roads & Service Corridors)  
Version 1.18.2

دائرة البلديات والنقل  
DEPARTMENT OF MUNICIPALITIES  
AND TRANSPORT

بلدية مدينة أبوظبي  
ABU DHABI CITY MUNICIPALITY



recreational	boatStorage
recreational	boatingAndFishingFacilities
recreational	butterflyGarden
recreational	cafeteria
recreational	camelRaceStand
recreational	camping
recreational	celebrationGround
recreational	chalet
recreational	club
recreational	culturalCenter
recreational	equestrianCenter
recreational	foodTrucksParking
recreational	footballPlayGround/Stadium
recreational	golfCourse
recreational	greenArea
recreational	heritageVillage
recreational	indoorRecreationFacility
recreational	indoorSports
recreational	kidsPlayPark
recreational	kiosk
recreational	ladiesClub
recreational	ladiesSwimmingArea
recreational	launchport
recreational	marina
recreational	multiuse
recreational	naturalOpenArea
recreational	openArea
recreational	openArea&Park
recreational	other
recreational	outdoorOrOpenSpaces
recreational	outdoorRecreation
recreational	outdoorRecreationFacility
recreational	park
recreational	parkAndParking
recreational	peopleCafe
recreational	playGames
recreational	playGround
recreational	playHall

## Town Planning Sector-Spatial Data Division

Standards & Specifications for Planning Data  
Submission (Plot, Roads & Service Corridors)  
Version 1.18.2

دائرة البلديات والنقل  
DEPARTMENT OF MUNICIPALITIES  
AND TRANSPORT

بلدية مدينة أبوظبي  
ABU DHABI CITY MUNICIPALITY



recreational	playPark
recreational	policeAndPublicSecurityClub
recreational	policeStaffClub
recreational	privateBeach
recreational	publicGarden
recreational	publicGardenAndOpenArea
recreational	raceTrack
recreational	recreational
recreational	resort
recreational	restHouse
recreational	sailingSchool
recreational	seaOpenResort
recreational	seaOpenResortAndFacilities
recreational	seaRestHouse
recreational	sportCenter
recreational	sportPlayground
recreational	sportServices
recreational	sportsClub
recreational	stadium
recreational	staple
recreational	swimmingPool
recreational	tempDecoration
recreational	temporaryBoatFloat
recreational	tennisClub
recreational	theatre
recreational	tmpRestHouse
recreational	tmpSeaRestHouse
recreational	tmpStables
recreational	undefined
recreational	waterGamesPark
recreational	waterbody
recreational	weddingHall
recreational	yacht/marinaClub
recreational	zoo
religious	MosqueAndWaqf
religious	WorshipHouse
religious	ablution
religious	cemetery

## Town Planning Sector-Spatial Data Division

Standards & Specifications for Planning Data  
Submission (Plot, Roads & Service Corridors)  
Version 1.18.2

دائرة البلديات والنقل  
DEPARTMENT OF MUNICIPALITIES  
AND TRANSPORT

بلدية مدينة أبوظبي  
ABU DHABI CITY MUNICIPALITY



religious	church
religious	churchAndSchool
religious	eidPrayer
religious	eidPrayerAndMosque
religious	femalePrayer
religious	grandJamea
religious	hinduTemple
religious	imamHouse
religious	largeMosqueJami
religious	morningPlace
religious	mosque
religious	mosqueAndCommunityMajlis
religious	mosqueAndQuranEducation
religious	mosqueFacilities
religious	muathenHouse
religious	other
religious	quranEducationalCenter
religious	undefined
religious	waqf
residential	Residential
residential	Villa Complex
residential	attachedVilla
residential	attachedVillas
residential	bachelorsHousing
residential	commercialCommunityService
residential	commercialProperty
residential	commercialVilla
residential	employeeHousing
residential	governmentVilla
residential	hotelStaffAccommodation
residential	investmentResidential
residential	investmentVilla
residential	laborHousing
residential	mixUse
residential	multiusage
residential	other
residential	palace
residential	privateResidentialComplex

## Town Planning Sector-Spatial Data Division

Standards & Specifications for Planning Data  
Submission (Plot, Roads & Service Corridors)  
Version 1.18.2

دائرة البلديات والنقل  
DEPARTMENT OF MUNICIPALITIES  
AND TRANSPORT

بلدية مدينة أبوظبي  
ABU DHABI CITY MUNICIPALITY



residential	publicHouse
residential	residential&retailshops
residential	residentialAndRetail
residential	residentialApartments
residential	residentialComplex
residential	residentialCompound
residential	residentialLand
residential	residentialVilla
residential	residentialVillas
residential	restHouse
residential	retail&Restaurants
residential	smallPublicHouse
residential	temporaryResidentialLand
residential	undefined
residential	villa
residential	villas
transportation	transportationEstablishment
transportation	Acoustic Barrier
transportation	TruckParking
transportation	Weighing Station
transportation	airbase
transportation	airport
transportation	airportGate
transportation	airstrip
transportation	basement
transportation	boatAnchorage
transportation	boatFloat
transportation	bridge
transportation	busTerminal
transportation	fireField
transportation	harbor
transportation	harboringStation
transportation	mainBusTerminal
transportation	militaryBase
transportation	other
transportation	parkingStructure
transportation	portFacilities
transportation	publicParking

## Town Planning Sector-Spatial Data Division

Standards & Specifications for Planning Data  
Submission (Plot, Roads & Service Corridors)  
Version 1.18.2

دائرة البلديات والنقل  
DEPARTMENT OF MUNICIPALITIES  
AND TRANSPORT

بلدية مدينة أبوظبي  
ABU DHABI CITY MUNICIPALITY



transportation	serviceRoad
transportation	ship&boatParking
transportation	surface parking
transportation	taxiStand
transportation	tempCrossingBridge
transportation	temporaryParkingStructure
transportation	temporayLand
transportation	tourist Port Station
transportation	trafficCCTVCenter
transportation	trafficControlCenter
transportation	trafficSignalControl
transportation	tramStation
transportation	truckCheckStation
transportation	truckServiceStation
transportation	undefined
transportation	underpass
transportation	vehicleRegistration
transportation	warehouse
transportation	waterTransport
utility	Primary Substation
utility	ATM
utility	CO2LogStation
utility	Container Station
utility	Container Station Project
utility	Control station for drainage of rain water
utility	ELC product plant water desalination related act.
utility	Guard Room
utility	Land Transport Facilities
utility	Marina
utility	Marina and jetty
utility	Maritime Transport Facilities
utility	Meet Me Room
utility	NetraTower
utility	Odor Treatment Plant
utility	Other Utility
utility	Pedestrian Sidewalk
utility	Petrol station
utility	PhotovoltaicPowerPlant

## Town Planning Sector-Spatial Data Division

Standards & Specifications for Planning Data  
Submission (Plot, Roads & Service Corridors)  
Version 1.18.2

دائرة البلديات والنقل  
DEPARTMENT OF MUNICIPALITIES  
AND TRANSPORT

بلدية مدينة أبوظبي  
ABU DHABI CITY MUNICIPALITY



utility	Public Toilet
utility	PumpStation
utility	Railway Permanent path
utility	Solid Waste Transport and Treatment Station
utility	TVbroadcastingStudio
utility	TVcablesAggregationBox
utility	TVstation/tower
utility	Telephone Exchange
utility	Telephone exchange
utility	Transformer Room
utility	Waste treatment facility
utility	Water Transport
utility	WaterRemoteControlUnit
utility	aircraftFuelTank
utility	assemblyWastePlant
utility	busStation
utility	carWashingStation
utility	centralMonitoringStation
utility	clPumpStation
utility	communicationStation
utility	communicationTransceivingStation
utility	compressorRoom
utility	controlCenter
utility	controlNetworkStation
utility	coolingServices
utility	desalinationPlant
utility	districtCooling
utility	dryDockBasin
utility	electGenerator
utility	electricControlRoom
utility	electricalRoom
utility	electricalSwitchsStation
utility	electricityEmergencyCenter
utility	electricityEmergencyOffice
utility	emergencyOffice
utility	energyStation
utility	etisalat
utility	etisalatTower

## Town Planning Sector-Spatial Data Division

Standards & Specifications for Planning Data  
Submission (Plot, Roads & Service Corridors)  
Version 1.18.2

دائرة البلديات والنقل  
DEPARTMENT OF MUNICIPALITIES  
AND TRANSPORT

بلدية مدينة أبوظبي  
ABU DHABI CITY MUNICIPALITY



utility	fiberOpticsRoom
utility	fireFightingStation
utility	freshWaterTank
utility	garbageLogStation
utility	garbishCollection
utility	gasDistributionStation
utility	gasPressureControlStation
utility	gasPressureRegulator/pumpingStation
utility	gasPumpStation
utility	gasReceivingPlatform
utility	gasReceptionStand
utility	gasStation
utility	gasSupplier
utility	gasTank
utility	gasValveSite
utility	geodeticControlPoint
utility	geodeticControlStation
utility	government/petrolStation
utility	gridStation
utility	individualkioskPOBox
utility	infrastructure/LandTransportFacilities
utility	infrastructure/districtCoolingAndHeating
utility	infrastructure/irrigation
utility	infrastructure/naturalgas
utility	infrastructure/powerSubstasion
utility	infrastructure/sewage
utility	infrastructure/utilities
utility	infrastructure/wastemanagement
utility	irregationWatertankSataion
utility	irrigationPumpStation
utility	irrigationWaterTank
utility	maintenanceBuilding
utility	marinePetrolStation
utility	maritimeTransport/boatDock
utility	monitoringControlRoom
utility	monitoringStation
utility	naturalGasFillingStation
utility	networkControlCenter

**Town Planning Sector-Spatial Data  
Division**

Standards & Specifications for Planning Data  
Submission (Plot, Roads & Service Corridors)  
Version 1.18.2

دائرة البلديات والنقل  
DEPARTMENT OF MUNICIPALITIES  
AND TRANSPORT

بلدية مدينة أبوظبي  
ABU DHABI CITY MUNICIPALITY



utility	officesAndPowerStation
utility	officesLaborAccommodationWorkshops
utility	oilPipelineConversionArea
utility	oilValve
utility	other
utility	parkingStructure
utility	pedestrianMovementFacilities
utility	petrolControlStation
utility	petrolStation
utility	postOffice
utility	potableWaterPumpSite
utility	potableWaterServices
utility	power
utility	powerAndDesalinationStation
utility	powerGenerationCenter
utility	powerStation
utility	powerStation/generatingHouse
utility	primaryStation
utility	publicServices
utility	publicToilet
utility	radioBroadcastingStudio
utility	radioStation/tower
utility	recyclingStation
utility	refrigeratedStores
utility	reservoir
utility	satelliteGroundStation
utility	seaWaterIntake
utility	securityCabin
utility	septicTank
utility	serviceCenter
utility	services
utility	services/Transportation/Infrastructure
utility	servicesCompound
utility	sewageLiftStation
utility	sewageServices
utility	seweragePumpStation
utility	sewerageTreatmentPlant
utility	storageArea

**Town Planning Sector-Spatial Data  
Division**

Standards & Specifications for Planning Data  
Submission (Plot, Roads & Service Corridors)  
Version 1.18.2

دائرة البلديات والنقل  
DEPARTMENT OF MUNICIPALITIES  
AND TRANSPORT

بلدية مدينة أبوظبي  
ABU DHABI CITY MUNICIPALITY



utility	storesOfficesLaborAccommodation
utility	storesOfficesLaborAccommodationWorkshopsParking
utility	stormPumpStation
utility	stormWaterControlRoom
utility	stormWaterFall
utility	stormWaterPond
utility	stormWaterPumpRoom
utility	stormWaterServices
utility	stormWaterStation
utility	stormWaterTank
utility	substation
utility	subsurfaceSewerageTreatmentTank
utility	surfaceParking
utility	surfaceWaterOutfall
utility	tabreedCentralStation
utility	tabreedRoom
utility	tabreedStation
utility	telecommunicationServices
utility	temporaryLand
utility	thermalPowerStationTank
utility	tmpPetrolStation
utility	trainingCenter
utility	transformer
utility	transmissionBoostingStation
utility	treatedWaterPumpStation
utility	treatedWaterTank
utility	undefined
utility	utilityStructure
utility	utilityinfrastructure
utility	valveControlAndDisconnectPrimaryStation
utility	valveControlAndDisconnectStation
utility	valvesRoom
utility	valvesRoomForGasLines
utility	warehouse
utility	wasteBurrier
utility	wasteCirculation
utility	wasteContainerSite
utility	wasteDisposalFacility

## Town Planning Sector-Spatial Data Division

Standards & Specifications for Planning Data  
Submission (Plot, Roads & Service Corridors)  
Version 1.18.2

دائرة البلديات والنقل  
DEPARTMENT OF MUNICIPALITIES  
AND TRANSPORT

بلدية مدينة أبوظبي  
ABU DHABI CITY MUNICIPALITY



utility	waterCITreatmentContainer
utility	waterEmergencyCenter
utility	waterMeteringStation
utility	waterNetworkControlCenterRoom
utility	waterPumpStation
utility	waterStorageOpen/reservoir/dam
utility	waterTankPumpStation
utility	waterTankerFillingStation
utility	waterValveRoom
utility	waterValves
utility	waterWell
undefined	Mosque
undefined	Weighing Station
undefined	undefined
investment	Attached Villa
investment	Villas
investment	advancedTechnologyCompanies
investment	attachedVilla
investment	attachedVillas
investment	aviationAcademy
investment	commercialProperty
investment	commercialVilla
investment	employeeHousing
investment	householdLiving
investment	investment
investment	investmentLand
investment	investmentResidential
investment	investmentVillas
investment	multiUnit
investment	privateHospital
investment	residential
investment	residential/householdLiving
investment	residential/householdLiving/multiUnit
investment	residential/multiUnit
investment	residential/residentialApartments
investment	residentialApartments
investment	residentialBuilding
investment	residentialVilla

## Town Planning Sector-Spatial Data Division

Standards & Specifications for Planning Data  
Submission (Plot, Roads & Service Corridors)  
Version 1.18.2

دائرة البلديات والنقل  
DEPARTMENT OF MUNICIPALITIES  
AND TRANSPORT

بلدية مدينة أبوظبي  
ABU DHABI CITY MUNICIPALITY



investment	residentialVillas
investment	singleUnit/detached
investment	townhouse
investment	undefined
investment	villa
investment	villaComplex
investment	weddingHall
public	AbuDhabiLadiesClub
public	ELC/nurserySchool
public	EducationalPurposes
public	Farmer Service Center
public	Fountain and clock tower
public	GazellesCoservation
public	Laboratoriesservices
public	MarketingCenter
public	ModeloftheLouvreMuseum
public	Mosaic Site
public	MultiPurposeHall
public	PoultryMarket
public	ResortCompound
public	TempBuilding
public	Vegetable Market
public	abandonedAnimalShelter
public	abandonedAnimals
public	abattoir
public	aerobaticSportCenter
public	agriSale Cnter
public	agriculturalGuidanceCenter
public	airQualityStation
public	airTrafficControl
public	armedForcesOfficersClub
public	auction
public	autismCenter
public	autoVillage
public	beachEntrance
public	beachMixed
public	boatFloatPort
public	boundarywall

## Town Planning Sector-Spatial Data Division

Standards & Specifications for Planning Data  
Submission (Plot, Roads & Service Corridors)  
Version 1.18.2

دائرة البلديات والنقل  
DEPARTMENT OF MUNICIPALITIES  
AND TRANSPORT

بلدية مدينة أبوظبي  
ABU DHABI CITY MUNICIPALITY



public	bufferZone
public	carParking
public	cattleMarket
public	civic/CivilDefense
public	civilDefenceBuilding
public	civilDefense
public	clinic
public	communityCenter
public	communityFacility
public	communityHall
public	communityService
public	companyHeadquarter
public	conservationArea
public	cooperative
public	corniche
public	cultural
public	culturalCenter
public	culturalEstablishments
public	customsChecking
public	department
public	developedOpenSpace
public	embassy
public	employeeHousing
public	establishSocialAndCulturalServices
public	familyDevelopmentFoundation
public	fireStation
public	flagPole
public	flowerClock
public	fodderAndBirdsMarket
public	fodderMarketCentre
public	forensicMedicineLab
public	freeZone
public	gasPressureRegulator/pumpingStation
public	gate
public	generalMarket
public	government
public	government/communityCenter
public	government/safetyAndSecurityServices

## Town Planning Sector-Spatial Data Division

Standards & Specifications for Planning Data  
Submission (Plot, Roads & Service Corridors)  
Version 1.18.2

دائرة البلديات والنقل  
DEPARTMENT OF MUNICIPALITIES  
AND TRANSPORT

بلدية مدينة أبوظبي  
ABU DHABI CITY MUNICIPALITY



public	governmentBuilding
public	governmentOffices
public	governmentReserve
public	governmentalServicesInstitutionalSocialAndCultural
public	guardBuilding
public	guardOffice
public	harbourAndPortFacilities
public	harbourServices
public	headquarterAndOffices
public	healthBuilding
public	healthCareAndEducation/Hospital
public	healthCareAndEducation/School
public	healthCareAndEducation/UniversitiesAndColleges
public	healthcare
public	heritageClub
public	hospital
public	industrialComplex
public	jameeMosque
public	kindergarten
public	ladiesBeachClub
public	lake
public	landfillSiteForFarmsAndRanches
public	largeMosqueJami
public	leasedkitchen
public	localCentre
public	mainStores
public	mall
public	managementBuilding
public	marina
public	marineConservation
public	meetingRoom
public	metroStation
public	mixedGradesSchool/femalePublic
public	mixedGradesSchool/malePublic
public	mixedGradesSchool/mixedPrivateSchool
public	monitoringCenter
public	monitoringControlCenter
public	mosque

## Town Planning Sector-Spatial Data Division

Standards & Specifications for Planning Data  
Submission (Plot, Roads & Service Corridors)  
Version 1.18.2

دائرة البلديات والنقل  
DEPARTMENT OF MUNICIPALITIES  
AND TRANSPORT

بلدية مدينة أبوظبي  
ABU DHABI CITY MUNICIPALITY



public	multiStageSchool
public	naturalArea
public	naturalOpenArea
public	nursery
public	offices&EquipmentDetention
public	openArea
public	openSpace
public	openSpaceAndRecreation
public	other
public	park/publicGarden
public	parkingAndBeachFacility
public	parkingStructure
public	peopleOfDetermination
public	policeBuilding
public	policeFacility
public	policeOfficersClub
public	policeStation
public	postOffice
public	publicFacilities
public	publicFacility
public	publicGarden
public	publicGarden/family
public	publicGarden/mixed
public	publicLand
public	publicToilets
public	quay
public	quranEducationalCenter
public	reclaimed
public	recreation/openSpace
public	recreationBeach
public	recreationPark/zoo
public	religious
public	religious/mosque
public	riceSilo
public	safetyAndSecurityServices
public	saleCenter
public	school
public	schools

## Town Planning Sector-Spatial Data Division

Standards & Specifications for Planning Data  
Submission (Plot, Roads & Service Corridors)  
Version 1.18.2

دائرة البلديات والنقل  
DEPARTMENT OF MUNICIPALITIES  
AND TRANSPORT

بلدية مدينة أبوظبي  
ABU DHABI CITY MUNICIPALITY



public	securityBarrier
public	securityChecking
public	securityFacility
public	securityTrainingCenter
public	services
public	sheepBarns&LaborAccommodation
public	shoppingCenter
public	socialCenter
public	specialNeedsCenter
public	sportsFacility
public	stores
public	surfaceParking
public	temporaryLand
public	temporaryQuorries
public	temporarySite
public	tmpWaterLoggingPool
public	travelRestArea
public	undefined
public	unionOffice
public	utilityStructure
public	vistorsCenter
public	vocationalCenter
public	vocationalTraining
public	warehouseAndGovernmentOffice
public	wasteContainerSite
services	Farmer Service Center
services	ServiceStation
services	Tabreed Central Station
services	assemblyWastePlant
services	chlorinationRoom
services	controlRoomOfRainwater
services	fireFightingStation
services	garbishCollectionCenter
services	guardRoom
services	publicServices
services	serviceComplex
services	storageSpace
Temporary	Marina - Recreational Boat Storage

## Town Planning Sector-Spatial Data Division

Standards & Specifications for Planning Data  
Submission (Plot, Roads & Service Corridors)  
Version 1.18.2

دائرة البلديات والنقل  
DEPARTMENT OF MUNICIPALITIES  
AND TRANSPORT

بلدية مدينة أبوظبي  
ABU DHABI CITY MUNICIPALITY



Temporary	BoatParking
Temporary	Camp
Temporary	Caravan
Temporary	Commercial Entertainment
Temporary	Consumer Exhibition
Temporary	CulturalInstitutions
Temporary	Fishermen's Council
Temporary	Food Truck Park
Temporary	ForTheConstructionOfTheUnionTrainRoute
Temporary	GeneralMarketAndBoatAndShipMaintRepairAndRefitting
Temporary	HagganaPatrols
Temporary	Helipad
Temporary	MobileFoodTrucks
Temporary	MotherOfTheNationFestival
Temporary	Offices for contractor
Temporary	Offices, stores, workshops and concrete casting
Temporary	Offices, warehouses and concrete mixing station
Temporary	Offices,warehouses and asphalt manufacturing
Temporary	OfficesAndStores
Temporary	OfficesStorageGuardingRoom
Temporary	OilandGas
Temporary	PaidBoatParking
Temporary	Passenger conversion station
Temporary	PrivateBoatParking
Temporary	PrivateLand
Temporary	ProjectLimits
Temporary	RampForLandingBoats
Temporary	Rental of desert bicycles
Temporary	Rest area
Temporary	Soakways
Temporary	SolidWasteManagement
Temporary	StorageFacility
Temporary	Store-Warehouse
Temporary	StoresAndLaborerCampAndOffices
Temporary	StoresAndLaborerhousing
Temporary	Storm Water Pond
Temporary	SurfaceParkingsAndLandscapes
Temporary	Temporary beach

## Town Planning Sector-Spatial Data Division

Standards & Specifications for Planning Data  
Submission (Plot, Roads & Service Corridors)  
Version 1.18.2

دائرة البلديات والنقل  
DEPARTMENT OF MUNICIPALITIES  
AND TRANSPORT

بلدية مدينة أبوظبي  
ABU DHABI CITY MUNICIPALITY



Temporary	Temporary land transport facilities
Temporary	Temporary offices and facilities
Temporary	TmpArtificiallake
Temporary	TruckParking
Temporary	Utilities
Temporary	VegetableMarket
Temporary	Vocational training
Temporary	Warehouse, offices and labor accommodation
Temporary	Waste collection
Temporary	Wharf
Temporary	abandonedAnimalShelter
Temporary	activities
Temporary	agriculturalMaintenanceProductsCollectionCenter
Temporary	agricultureResidueCollection
Temporary	akderSocialFestival
Temporary	arabianTentsAndRestaurant
Temporary	automaticBakery
Temporary	basement Extension
Temporary	bazaarMarket
Temporary	beachWorks
Temporary	boatLaunchingAndParkingArea
Temporary	camping
Temporary	carDetentionYard
Temporary	carParking
Temporary	carnival
Temporary	celebrationsyard
Temporary	communityService
Temporary	crossingBridge
Temporary	desertCamp
Temporary	drilling
Temporary	drillingAndBurial
Temporary	drillingProducts
Temporary	employeeHousingAndProjectPrivateArea
Temporary	equipmentYard
Temporary	etisalatTower
Temporary	exploratoryWork
Temporary	factoryAndLaborAccommodation
Temporary	fastFoodRestaurant

## Town Planning Sector-Spatial Data Division

Standards & Specifications for Planning Data  
Submission (Plot, Roads & Service Corridors)  
Version 1.18.2

دائرة البلديات والنقل  
DEPARTMENT OF MUNICIPALITIES  
AND TRANSPORT

بلدية مدينة أبوظبي  
ABU DHABI CITY MUNICIPALITY



Temporary	foodTrucksParking
Temporary	freeSpecialCarShow
Temporary	garbishCollection
Temporary	guardRoom
Temporary	guardRoomAndGatecontrol
Temporary	harbourAndPortFacilities
Temporary	industrial
Temporary	industrial/temporaryFilmingLocation
Temporary	irrigationPumpStation
Temporary	irrigationWaterTank
Temporary	izbaSeasonal
Temporary	kiosk
Temporary	laborCamp
Temporary	laborFamilyHousing
Temporary	laboratoryAndStoresAndPrefabricatedYard
Temporary	loadingandoffloadingmaterials
Temporary	logistic
Temporary	mangrovePark
Temporary	market
Temporary	materialStorage
Temporary	mobileRecreationCity
Temporary	mosaicSite
Temporary	mosque
Temporary	multiusage
Temporary	naturalGasStation
Temporary	nurseryFarm
Temporary	officeAndMaterialStorage
Temporary	offices
Temporary	offices-stores-laboratories
Temporary	officesAndLaborAccommodation
Temporary	officesAndLaboratories
Temporary	officesAndLaboratoryAndStores
Temporary	officesAndLogistic
Temporary	officesAndRestHouse
Temporary	officesAndStores
Temporary	officesAndStoresAndAsphaltMixer
Temporary	officesStoresAndConcrete
Temporary	officesStoresAndGuardRoom

## Town Planning Sector-Spatial Data Division

Standards & Specifications for Planning Data  
Submission (Plot, Roads & Service Corridors)  
Version 1.18.2

دائرة البلديات والنقل  
DEPARTMENT OF MUNICIPALITIES  
AND TRANSPORT

بلدية مدينة أبوظبي  
ABU DHABI CITY MUNICIPALITY



Temporary	officesStoresAndworkshops
Temporary	oilPipelineConversionArea
Temporary	oilWell
Temporary	openMarkets
Temporary	park/publicGarden
Temporary	parkingStructure
Temporary	playGames
Temporary	playground
Temporary	pointOfWasteCollectionAndSorting
Temporary	privateDock
Temporary	publicKitchenAndRestaurant
Temporary	puncture
Temporary	quarry
Temporary	ramadanTent
Temporary	ranch
Temporary	readyMixConcreteFactory
Temporary	reclaimed
Temporary	recreational
Temporary	recyclingFacility
Temporary	restaurant
Temporary	restaurantAndPuncher
Temporary	restaurants
Temporary	retailTrade
Temporary	salesCentre
Temporary	services
Temporary	sewerageTreatmentPlant
Temporary	shops
Temporary	showroom
Temporary	sitePreparation
Temporary	smokingRoom
Temporary	soilLoadingQuorries
Temporary	storage
Temporary	storageOfficesAndDrilling
Temporary	store&Laboratory
Temporary	stores
Temporary	storesAndLogistic
Temporary	stormWaterPond
Temporary	stormWaterTank

## Town Planning Sector-Spatial Data Division

Standards & Specifications for Planning Data  
Submission (Plot, Roads & Service Corridors)  
Version 1.18.2

دائرة البلديات والنقل  
DEPARTMENT OF MUNICIPALITIES  
AND TRANSPORT

بلدية مدينة أبوظبي  
ABU DHABI CITY MUNICIPALITY



Temporary	substation/PackageUnit
Temporary	superMarket
Temporary	surfaceParking
Temporary	telephoneExchange
Temporary	tempDecoration
Temporary	tempFacilityLand
Temporary	temporaryBoatFloat
Temporary	temporaryLand
Temporary	temporaryResidentalLand
Temporary	temporarySite
Temporary	temporaryWall
Temporary	tent
Temporary	theOutletOfSeasonalProductsAndHalal
Temporary	tmpHorsesRanch
Temporary	tmpRanch
Temporary	tmpSeaRestHouse
Temporary	tmpSportsFacilities
Temporary	tmpTransformer
Temporary	tmpWaterLoggingPool
Temporary	touristCamp
Temporary	transportDepot
Temporary	tunnelOperationOffice
Temporary	vegetableMarket
Temporary	visitorReceptionRoom
Temporary	walkingTrackAndPublicBeach
Temporary	welcomeCenter
Temporary	winterRanch
Temporary	workshops
publicBuilding	governmentReserve
publicBuilding	Community Center -
publicBuilding	Library
publicBuilding	Mosque Jamea
publicBuilding	Bus shelter
publicBuilding	Civil Defense
publicBuilding	Clinic Speciality
publicBuilding	Council neighborhood
publicBuilding	Educational
publicBuilding	Electricityandwaterservices

## Town Planning Sector-Spatial Data Division

Standards & Specifications for Planning Data  
Submission (Plot, Roads & Service Corridors)  
Version 1.18.2

دائرة البلديات والنقل  
DEPARTMENT OF MUNICIPALITIES  
AND TRANSPORT

بلدية مدينة أبوظبي  
ABU DHABI CITY MUNICIPALITY



publicBuilding	General Medical Centre
publicBuilding	Government Office
publicBuilding	GovernmentHeadquarter
publicBuilding	Horses Showroom
publicBuilding	Hospital
publicBuilding	Hospital Staff Quarters
publicBuilding	Majlis
publicBuilding	Marina
publicBuilding	MilitaryFacilities
publicBuilding	Mixed Grades School - Male Public
publicBuilding	Mixed Private School
publicBuilding	Morgue
publicBuilding	Mosque
publicBuilding	Multipurpose Hall
publicBuilding	Mussallah
publicBuilding	Nursery
publicBuilding	Offices
publicBuilding	Offices - DetainViolatorsEquipment
publicBuilding	Petrol station
publicBuilding	Ports facilities
publicBuilding	Post Office
publicBuilding	Real Estate Services
publicBuilding	Rehabilitation Centre
publicBuilding	SafetyAndSecurityServices
publicBuilding	School
publicBuilding	Schools
publicBuilding	Security Facilities
publicBuilding	StaffAccommodation
publicBuilding	Surface Parking
publicBuilding	Transportation facilities
publicBuilding	Waste dump
publicBuilding	administrativeOfficesComplex
publicBuilding	governmental services
publicBuilding	municipality
publicBuilding	policeStation
publicBuilding	undefined
publicOpenSpace	Beach Recreational
publicOpenSpace	Conservation District

## Town Planning Sector-Spatial Data Division

Standards & Specifications for Planning Data  
Submission (Plot, Roads & Service Corridors)  
Version 1.18.2

دائرة البلديات والنقل  
DEPARTMENT OF MUNICIPALITIES  
AND TRANSPORT

بلدية مدينة أبوظبي  
ABU DHABI CITY MUNICIPALITY



publicOpenSpace	ConservationArea
publicOpenSpace	Developed Open Space
publicOpenSpace	Food Truck Park
publicOpenSpace	OPEN SPACE RECREATION Open Space Recreation
publicOpenSpace	Open Space & Recreation
publicOpenSpace	Park/Public Garden
publicOpenSpace	Protected area
publicOpenSpace	Public Garden
publicOpenSpace	Utility
publicOpenSpace	openArea
publicOpenSpace	outdoor recreation
publicOpenSpace	undefined